



cRc Nationwide

COMMERCIAL REAL ESTATE CONSULTANTS



784-792 EAST 3300 SOUTH, SALT LAKE CITY, UTAH 84106

*** DO NOT DISTURB TENANT ***



Property Information

- Suite 792: 1,755 SF - End Cap Restaurant Equipped with a Hood & Grease Trap
- Ample Parking: 4.52/1,000 SF
- Highly Visible with Access from 3300 South
- Many Restaurant & Retail Amenities Nearby
- Great Exposure with High Traffic Counts
- Easy Access to State Street, I-15 and I-80

LEASE RATE: \$15.00/SF NNN

Demographics

	1 Mile	3 Mile	5 Mile
Population	21,559	146,195	346,929
Households	8,732	58,905	136,921
Avg. Household Income	\$48,221	\$56,472	\$57,865

Traffic Counts

700 East: 58,415 Annual Average Daily Traffic
 3300 South: 25,100 Annual Average Daily Traffic

Call for Appointment and/or Details

801.617.1700

DANEILE SNELLING
 DANEILE.SNELLING@CRCNATIONWIDE.COM

PAT BARTON
 PAT.BARTON@CRCNATIONWIDE.COM

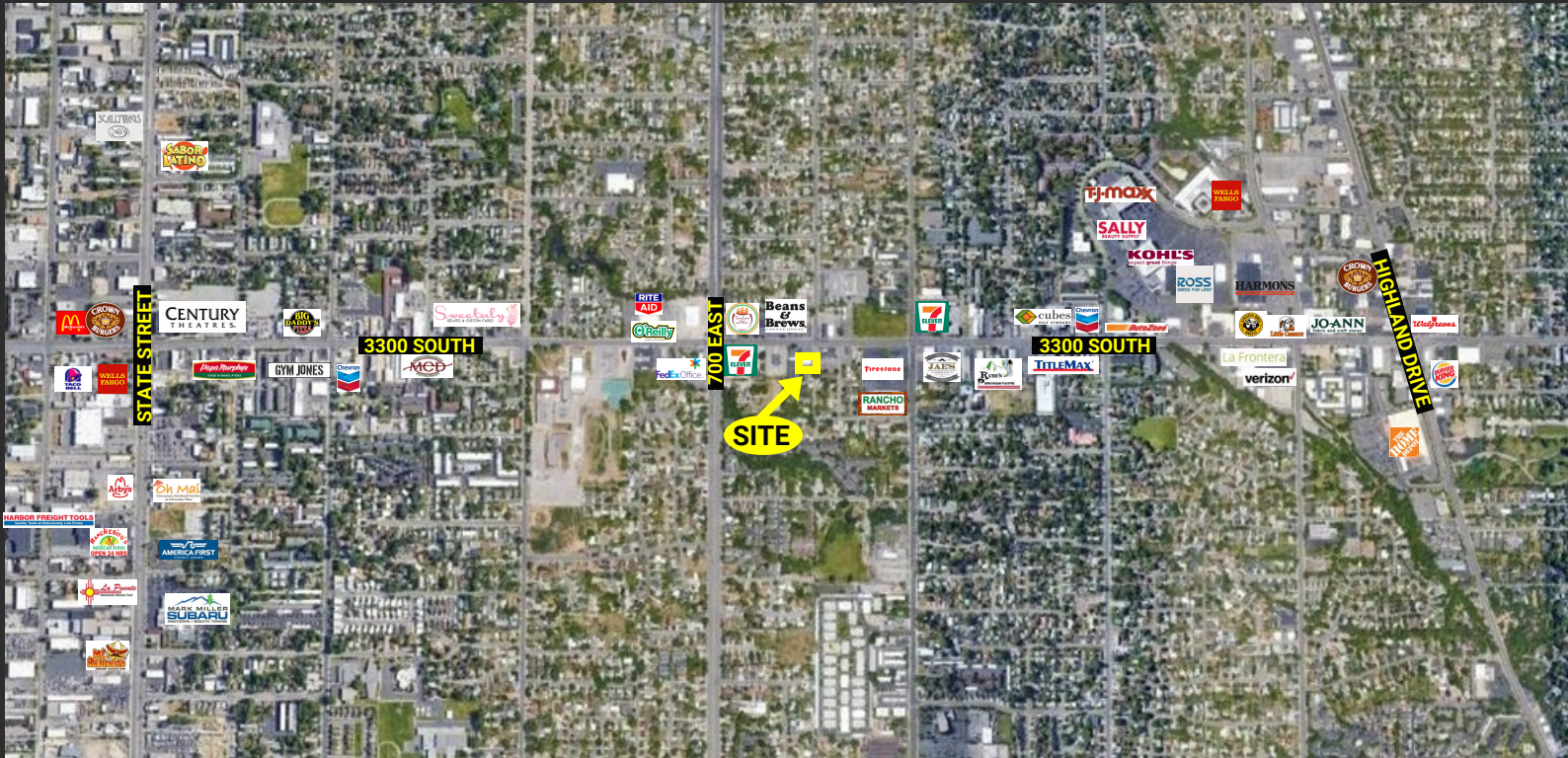


cRc Nationwide

COMMERCIAL REAL ESTATE CONSULTANTS



784-792 EAST 3300 SOUTH, SALT LAKE CITY, UTAH 84106



DANEILE SNELLING
DANEILE.SNELLING@CRCNATIONWIDE.COM

PAT BARTON
PAT.BARTON@CRCNATIONWIDE.COM

801.617.1700



COSTAR
POWER BROKER AWARD

TOP FIRM
2010, 2011, 2012, 2013,
2014, 2015, 2016, 2017