



cRc Nationwide

COMMERCIAL REAL ESTATE CONSULTANTS



FOR LEASE



2290 EAST 4500 SOUTH, HOLLADAY UTAH 84117

- Suite 220: 1,400 RSF Office Space
- Common Waiting Area
- Holladay Office Space
- Great Natural Light and Spectacular Mountain Views
- Parking Ratio: 3.6/1,000 SF
- Elevator
- ADA Accessible
- 14,592 RSF Total Building
- Minutes to Downtown Holladay
- Many Restaurants and Amenities Nearby
- Easy Access to I-215

LEASE RATE: \$15.00/SF FULL SERVICE

Demographics

	1 Mile	3 Mile	5 Mile
Population	15,834	112,137	266,899
Households	5,745	44,356	104,566
Avg. Household Income	\$78,918	\$66,674	\$61,132

Traffic Counts

2300 East: 12,115 Annual Average Daily Traffic
 4500 South: 16,910 Annual Average Daily Traffic

CONTACT

801.617.1700

KELLEN KONCAR
 KELLEN.KONCAR@CRCNATIONWIDE.COM

DANEILE SNELLING
 DANEILE.SNELLING@CRCNATIONWIDE.COM

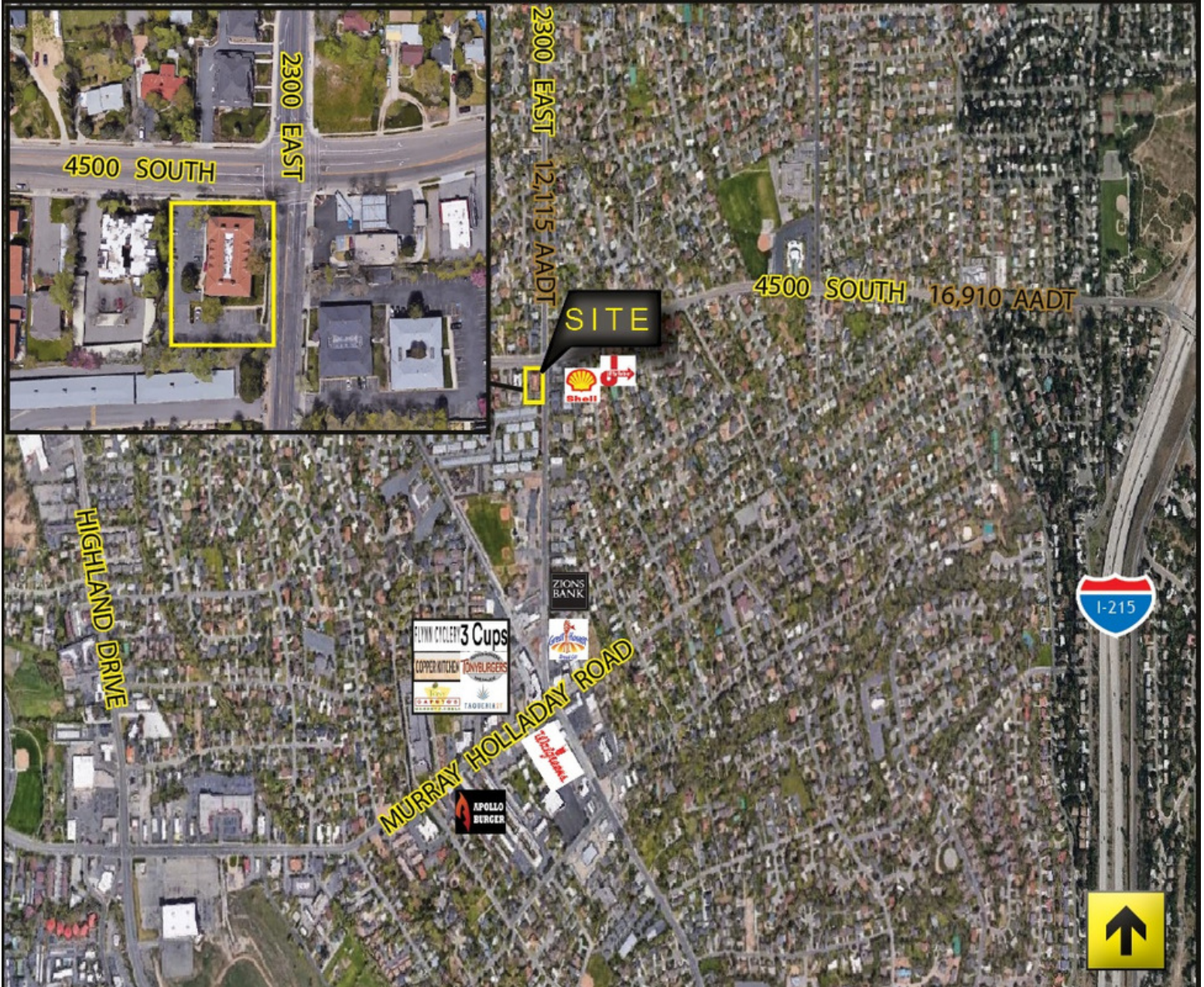


cRc Nationwide

COMMERCIAL REAL ESTATE CONSULTANTS



2290 EAST 4500 SOUTH, HOLLADAY 84117



CONTACT

801.617.1700

KELLEN KONCAR

DANEILE SNELLING

KELLEN.KONCAR@CRCNATIONWIDE.COM

DANEILE.SNELLING@CRCNATIONWIDE.COM