



cRc Nationwide

COMMERCIAL REAL ESTATE CONSULTANTS

746 EAST WINCHESTER STREET, MURRAY 84107

MURRAY OFFICE SUITE FOR SUBLEASE



PROPERTY INFORMATION

- **SUITE 120:** 8,200 RSF OFFICE SPACE
- LED 1/31/2019
- ON SITE FITNESS CENTER WITH SHOWERS
- SECURED UNDERGROUND PARKING
- BASEMENT STORAGE UNIT AVAILABLE
- MINUTES TO FASHION PLACE MALL AND FORT UNION RESTAURANT & RETAIL AMENITIES
- CONVENIENT ACCESS TO I-215 AND I-15



LEASE RATE: \$14.25/SF FULL SERVICE

801.617.1700

GREG MCDONALD

GREG.MCDONALD@CRCNATIONWIDE.COM



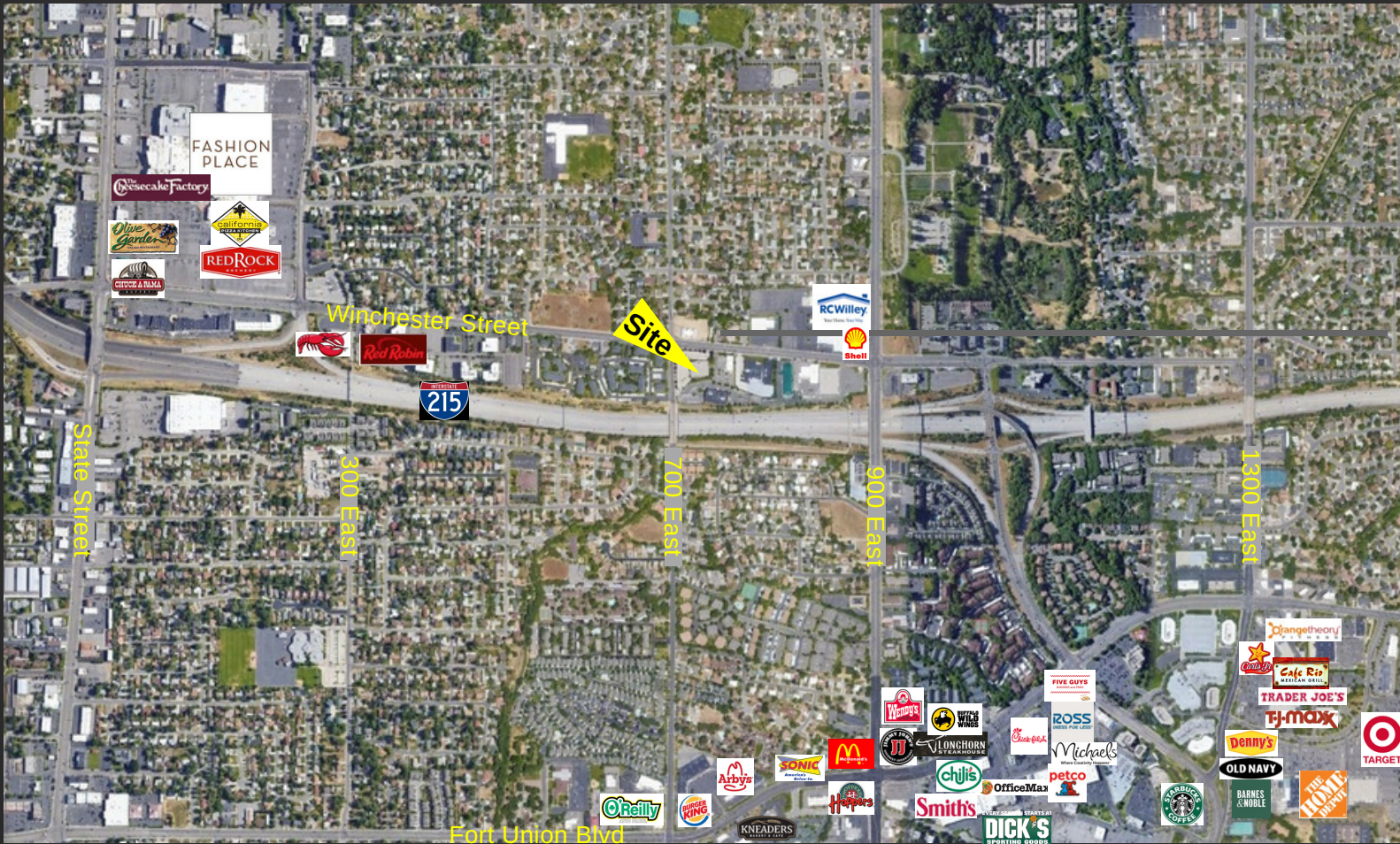
**COSTAR
POWER BROKER AWARD**
TOP FIRM
2010, 2011, 2012, 2013,
2014, 2015, 2016, 2017



cRc Nationwide

COMMERCIAL REAL ESTATE CONSULTANTS

746 EAST WINCHESTER STREET, MURRAY 84107



801.617.1700

GREG MCDONALD

GREG.MCDONALD@CRCNATIONWIDE.COM



COSTAR
POWER BROKER AWARD
TOP FIRM
2010, 2011, 2012, 2013,
2014, 2015, 2016, 2017