

4750 WEST WILEY POST WAY, SALT LAKE CITY, UTAH 84116



SALT LAKE CITY OFFICE WAREHOUSE FOR LEASE

BUILDING 1

- 51,412 SF Total Available for Lease

Divisible to:

- Suite 130 & 140: 18,966 SF
(1) 10' x 10' GL Door
- Suite 150: 27,544 SF
(1) 12' x 12' GL Door
(1) 10' x 10' GL Door
- Suite 170/180: 4,902 RSF

- Fiber Available
- Perfect for a Call Center
- Exposed Brick on Interior Walls
- Ceiling Height: 9' - 16'
- Fire Sprinkled
- Ample Parking: 6.04/1,000 SF
- Easy Access to Salt Lake International Airport and Bus Lines
- Minutes to I-80 Access

LEASE RATE: \$0.50/SF NNN

*** 4% to Procuring Broker ***

8 0 1 . 6 1 7 . 1 7 0 0

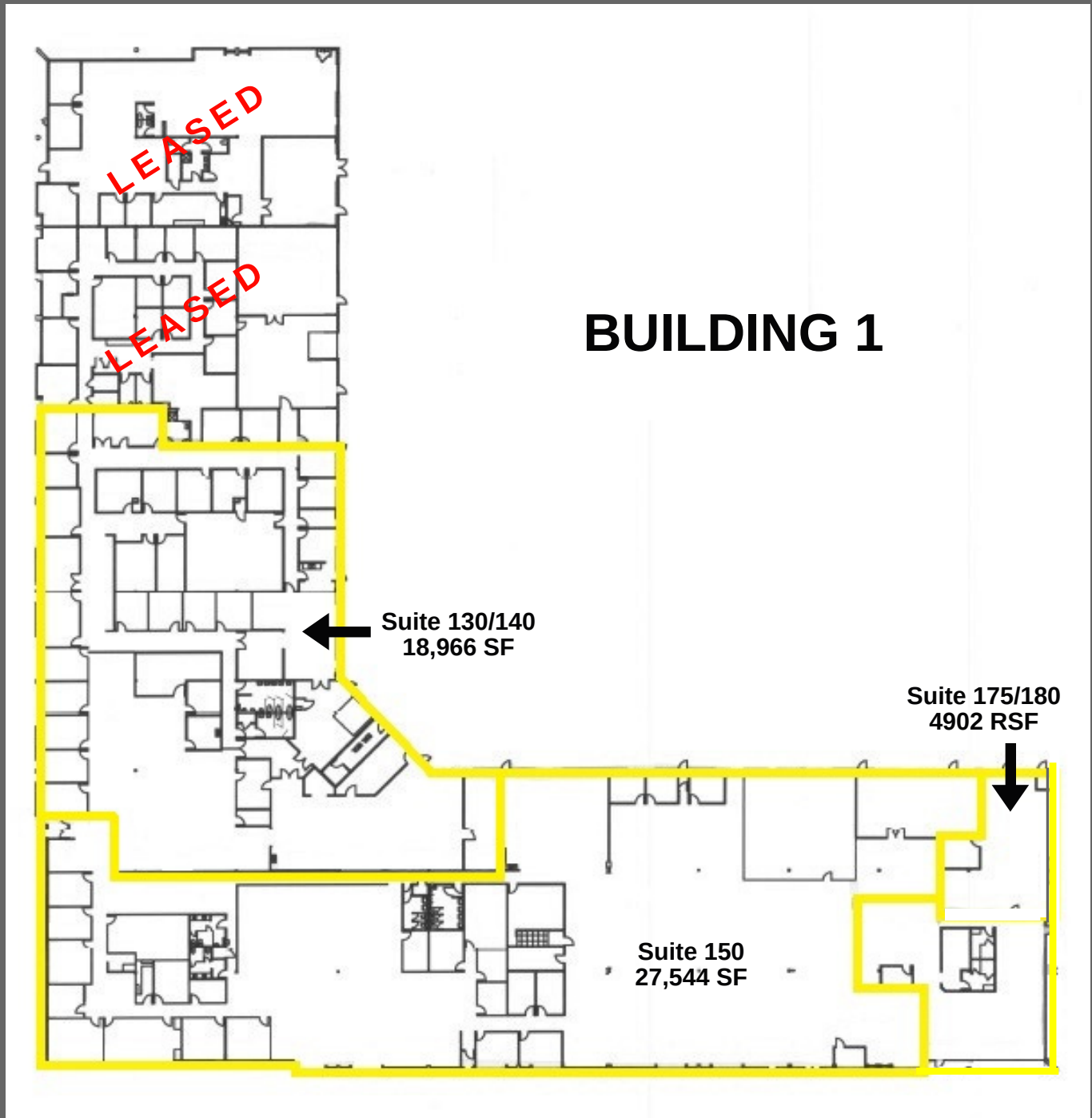


DANEILE SNELLING

KELLEN KONCAR

DANEILE.SNELLING@CRCNATIONWIDE.COM

KELLEN.KONCAR@CRCNATIONWIDE.COM



801.617.1700

DANEILE SNELLING

DANEILE.SNELLING@CRCNATIONWIDE.COM



KELLEN KONCAR

KELLEN.KONCAR@CRCNATIONWIDE.COM

4750 WEST WILEY POST WAY, SALT LAKE CITY, UTAH 84116

This information is given with the understanding that all negotiations and/or real estate activity related to the property described above shall be conducted through this cRc Nationwide office. The information while not guaranteed, was obtained from sources we believe to be reliable.



801.617.1700

DANEILE SNELLING

DANEILE.SNELLING@CRCNATIONWIDE.COM



KELLEN KONCAR

KELLEN.KONCAR@CRCNATIONWIDE.COM