

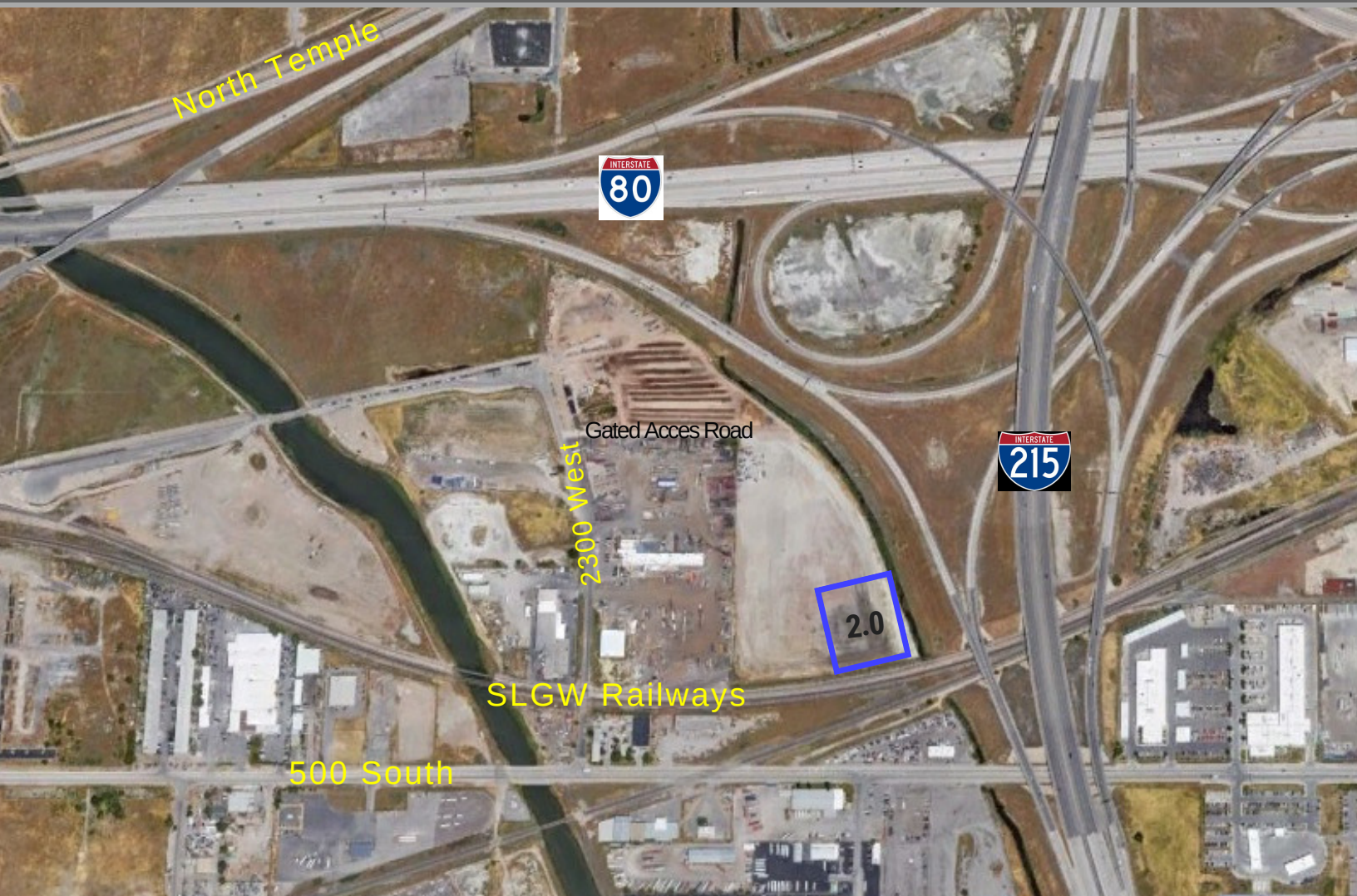


cRc Nationwide

COMMERCIAL REAL ESTATE CONSULTANTS

285 SOUTH 2650 WEST, SALT LAKE CITY 84104

INDUSTRIAL LAND FOR LEASE



PROPERTY INFORMATION

- 2.0 Acres - \$2,000.00/Month
- Zoned: M-1
- Potential Rail Service
- High Visibility from I-80 and I-215
- Convenient Freeway Access
- Minutes to Salt Lake International Airport

801.617.1700

WEST HARADIN
west.haradin@crcnationwide.com

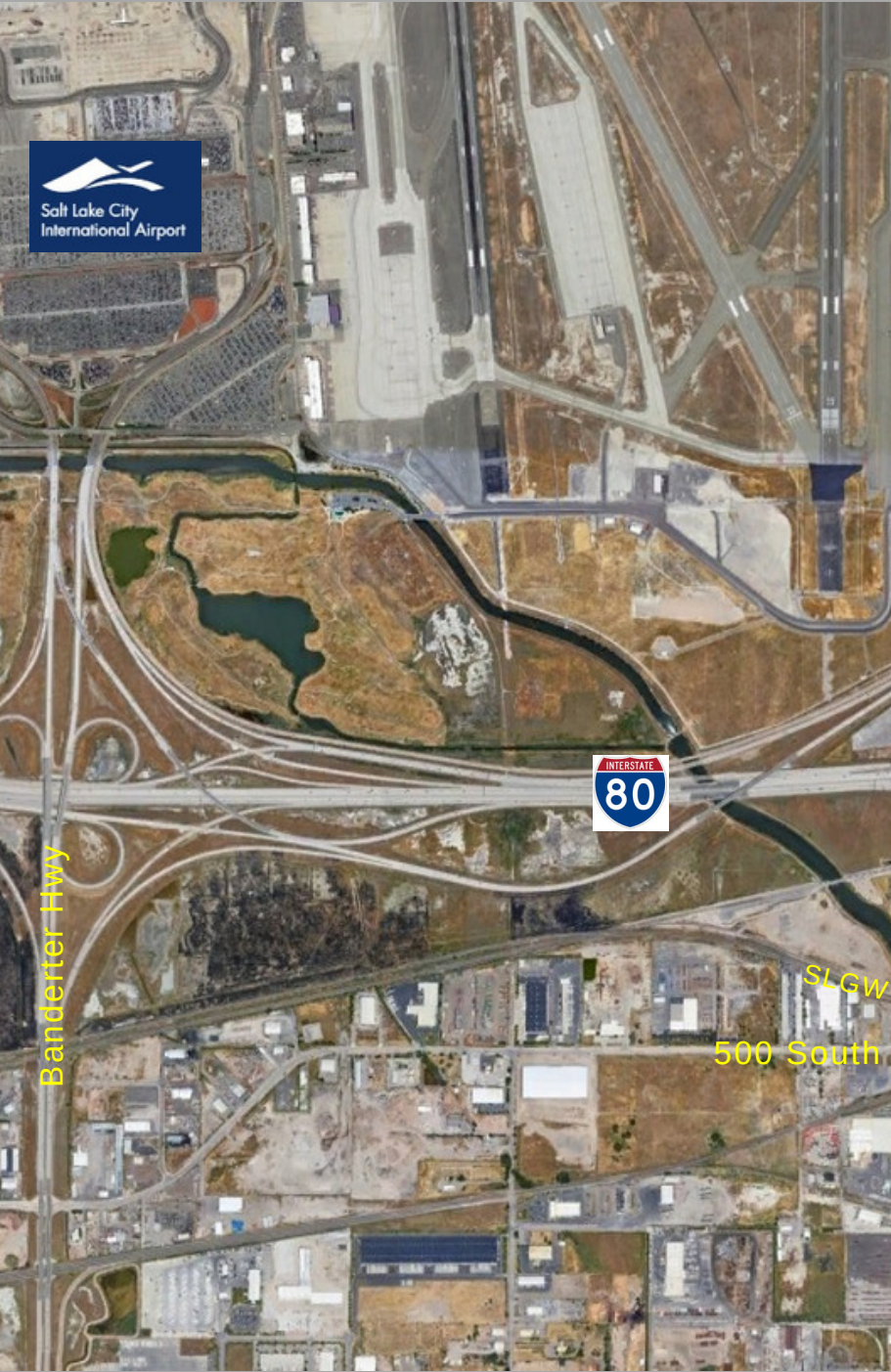
DANEILE SNELLING
daneile.snelling@crcnationwide.com



cRc Nationwide

COMMERCIAL REAL ESTATE CONSULTANTS

285 SOUTH 2650 WEST, SALT LAKE CITY 84104



Site

SLGW Railways
500 South

Banderter Hwy

Redwood Road

801.617.1700

WEST HARADIN
west.haradin@crcnationwide.com

DANEILE SNELLING
daneile.snelling@crcnationwide.com