



## Rare Fort Union Office Available

- Suite 130: 1,353 RSF
- Professionally Managed
- Monument Signage Available
- Possible Building Signage
- Ample Parking: 4.5/1,000 SF
- Minutes from I-215 Access

**LEASE RATE : \$18.00/SF FULL SERVICE**  
- Less Interior Janitorial -

**801.617.1700**

## Demographics

	1 Mile	3 Mile	5 Mile
Population	146,219	105,525	252,659
Households	56,037	39,924	92,886
Avg. Household Income	\$78,658	\$81,608	\$70,970

## Traffic Counts

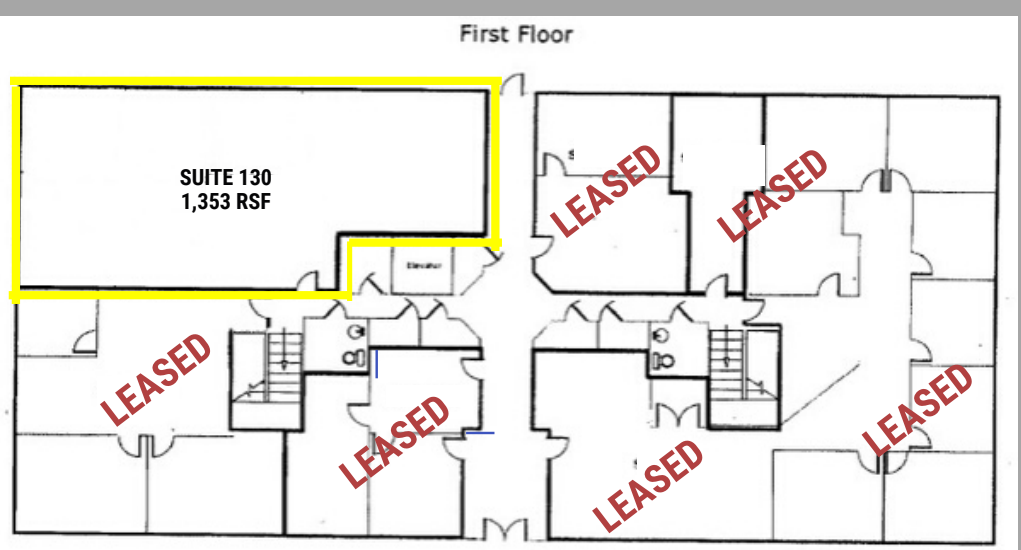
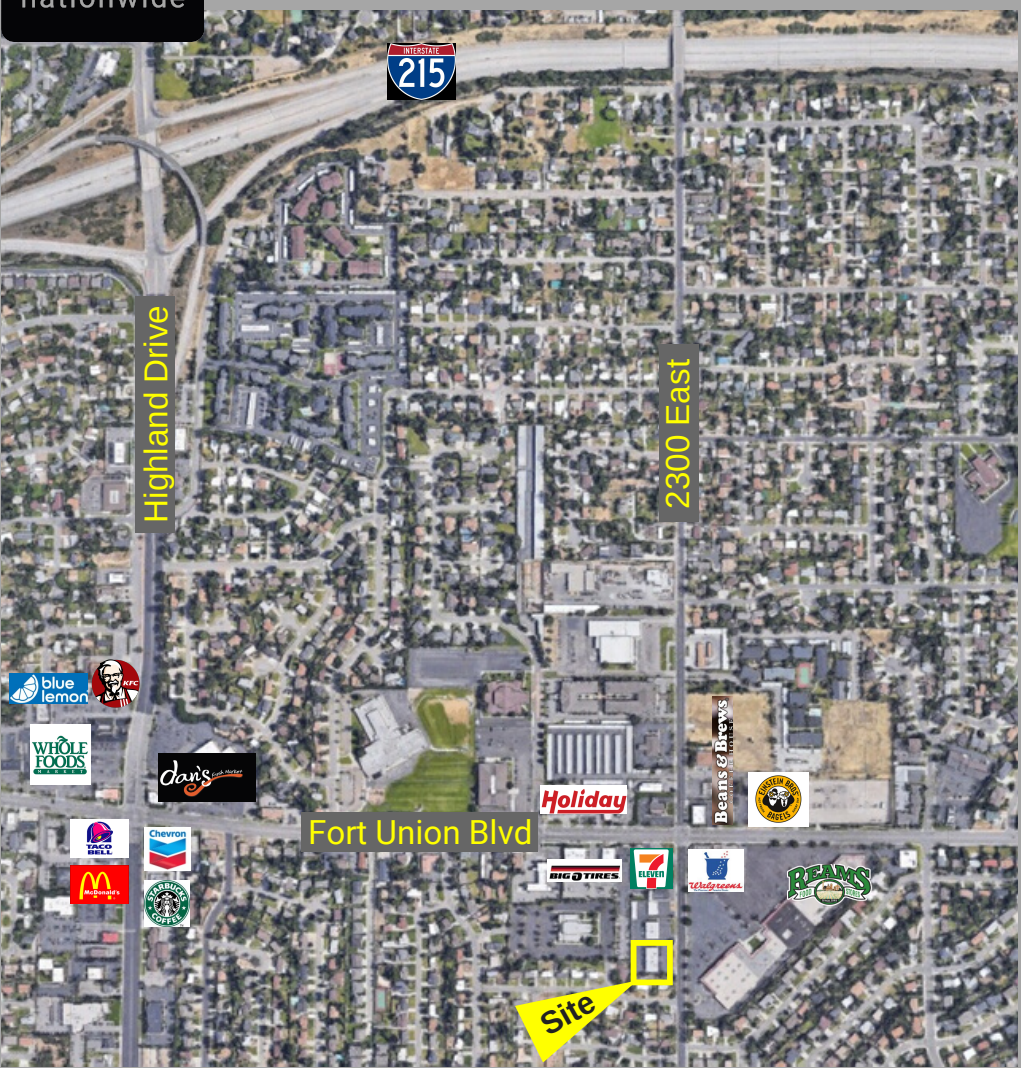
Fort Union Blvd: 27,595 Annual Average Daily Traffic  
2300 East: 13,301 Annual Average Daily Traffic



KELLEN KONCAR  
KELLEN.KONCAR@CRCNATIONWIDE.COM

DANEILE SNELLING  
DANEILE.SNELLING@CRCNATIONWIDE.COM

7084 SOUTH 2300 EAST, COTTONWOOD HEIGHTS 84121



This information is given with the understanding that all negotiations and/or real estate activity related to the property described above shall be conducted through this cRc Nationwide office. The above information while not guaranteed, was obtained from sources we believe to be reliable.

**KELLEN KONCAR**

**801.617.1700**

**DANEILE SNELLING**

KELLEN.KONCAR@CRCNATIONWIDE.COM

DANEILE.SNELLING@CRCNATIONWIDE.COM