



Holmberg Rd

US 441 S

COLONIAL PLAZA / 6710 - 6750 State Road 7, Coconut Creek, FL 33073

**FOR LEASE RETAIL**  
Build Your Space! from +/- 750 to 2,250 sqft



- Great Location / Excellent Demographics
- B2 Zoning, City of Coconut Creek
- Frontage to State Road 7 / High Traffic counts
- Shell Space (Designer Ready)
- Divisible into 3 units of +/- 750 sqft each / \$27 NNN

**SPACE OPTIONS**

- A) +/- 2,250 SQFT
- B) +/- 1,500 SQFT
- C) +/- 750 SQFT

**\$ 25-27 NNN / \$9 CAM**



**CHRISTIAN PERLINI, PA**  
CPerlini@icloud.com  
www.trecfl.com  
**954.444.8690**



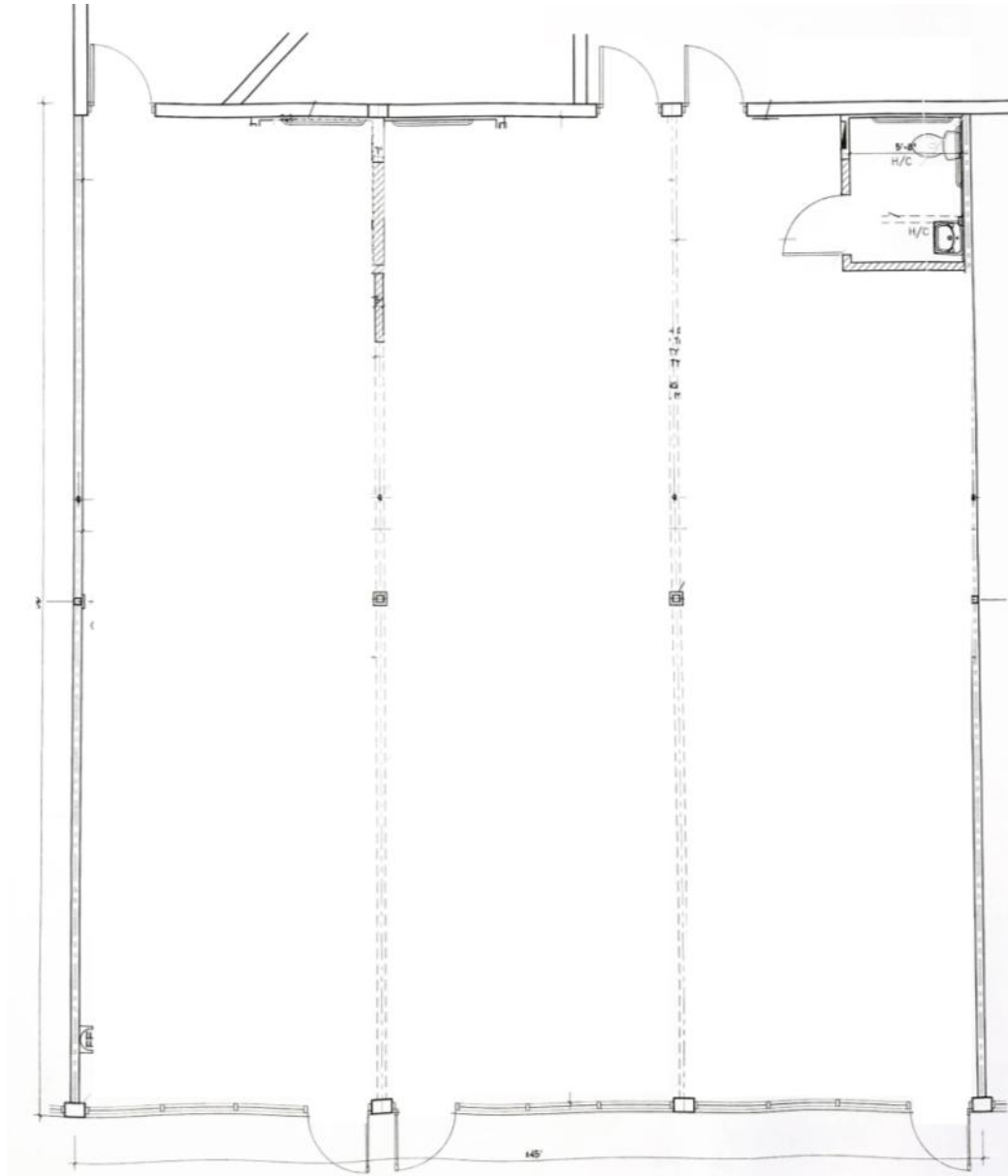
**JOE PELAYO, CCIM, SIOR**  
TREC@joepelayo.com  
www.trecfl.com  
**954.224.8773**



NOTE: This offering subject to errors, omissions, prior sales or withdrawal without notice



6710 - 6750 State Road 7, Coconut Creek, FL 33073



**+/- 2,250 SQFT**  
**DIVISIBLE INTO 3 UNITS OF**  
**+/- 750 SQFT EACH**  
**\$ 27 NNN / \$9 CAM**

**AVERAGE DAILY TRAFFIC COUNT**

- State Road 7 / US 441  
55,000

**POPULATION RADIUS**

- 1 Mile 11,295
- 3 Mile 101,814
- 5 Mile 204,414

Specific tapestry life style, demographic and income information available upon request.

ENTRANCE

ENTRANCE

ENTRANCE



**CHRISTIAN PERLINI, PA**  
CPerlino@icloud.com  
www.trecfl.com  
**954.444.8690**



**JOE PELAYO, CCIM, SIOR**  
TREC@joepelayo.com  
www.trecfl.com  
**954.224.8773**



NOTE: This offering subject to errors, omissions, prior sales or withdrawal without notice