



**INDUSTRIAL
SUBLEASE**



INDUSTRIAL / WAREHOUSE WITH FENCED YARD

- 15,000 SF Industrial/Warehouse
- 3 Phase Power/480 Volt
- (1) 14' x 18' Ground Level Door
- Up to 4.67 Acres of Fenced Yard
- Clearance Height: 20'
- Fire Sprinklers and GFA Heating
- Year Built: 1998
- Zoning: M-1
- Convenient Access to California Avenue, I-215, I-80 and Bangarter Hwy

LEASE RATE: \$0.50/SF MONTH NNN

801.617.1700

WEST HARADIN
WEST.HARADIN@CRCNATIONWIDE.COM



DEREK KLOPFER
DEREK.KLOPFER@CRCNATIONWIDE.COM

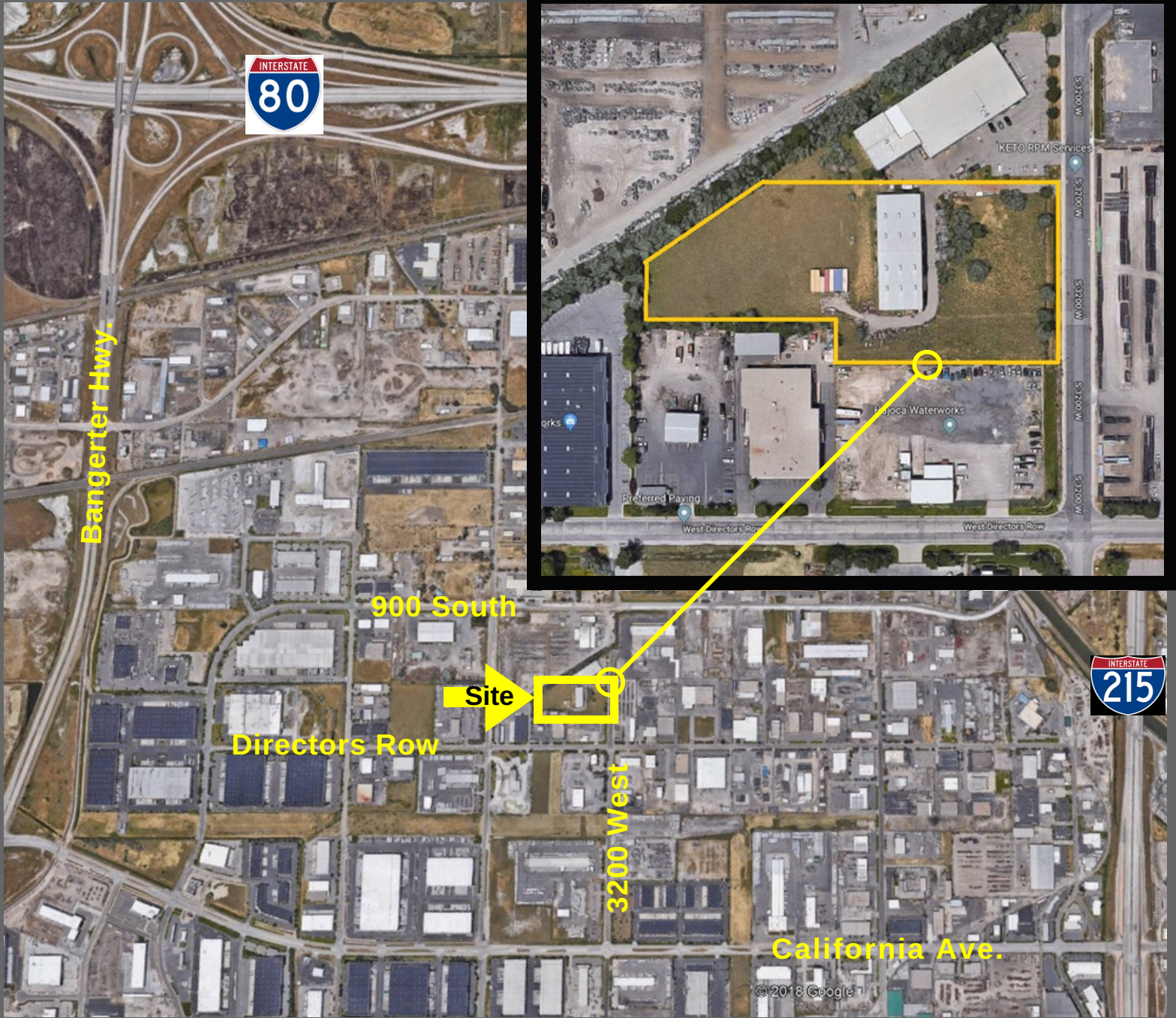


cRc Nationwide

COMMERCIAL REAL ESTATE CONSULTANTS



1050 SOUTH 3200 WEST, SALT LAKE CITY 84104



801.617.1700

WEST HARADIN
WEST.HARADIN@CRCNATIONWIDE.COM

DEREK KLOPFER
DEREK.KLOPFER@CRCNATIONWIDE.COM



COSTAR
POWER BROKER AWARD
TOP FIRM IN SALES & LEASING
2010, 2011, 2012, 2013, 2014, 2015, 2016