



# cRc Nationwide

COMMERCIAL REAL ESTATE CONSULTANTS

## MILLCREEK PROFESSIONAL OFFICE BUILDING

2059 EAST 3900 SOUTH, SALT LAKE CITY, 84124

**FOR LEASE**

### PROPERTY INFORMATION

- 2,000 SF Available
- Private Entrance
- Monument Signage Available
- Ample Parking: 5/1,000 SF
- 4,000 SF Total Building
- Great Millcreek Location
- Close to St. Marks Hospital and Retail Amenities
- Easy Access to I-215



**LEASE RATE:**  
**\$1,500.00/MONTH NNN**

### DEMOGRAPHICS

#### TRAFFIC COUNTS

3900 South: 21,920 AADT  
 2300 East: 15,795 AADT

	1 MILE	3 MILE	5 MILE
Population	13,461	104,466	328,222
Households	4,652	33,899	104,431
Avg Household Income	\$69,049	\$67,929	\$72,560

**KELLEN KONCAR**

**KELLEN.KONCAR@CRCNATIONWIDE.COM**

**801.617.1700**

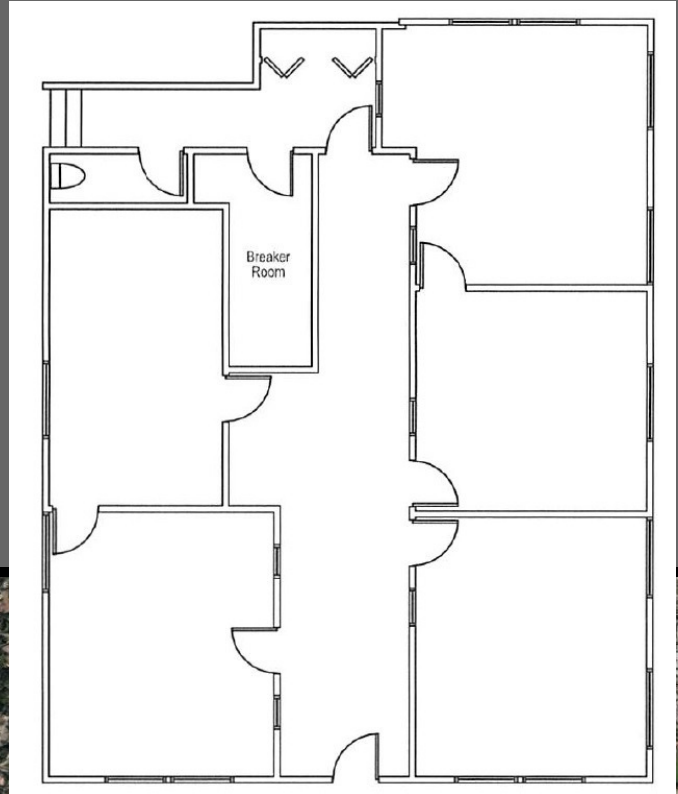


**COSTAR**  
**POWER BROKER AWARD**  
 TOP FIRM IN SALES & LEASING  
 2010, 2011, 2012, 2013, 2014, 2015, 2016



# cRc Nationwide

COMMERCIAL REAL ESTATE CONSULTANTS



KELLEN KONCAR

KELLEN.KONCAR@CRCNATIONWIDE.COM

801.617.1700



COSTAR  
POWER BROKER AWARD  
TOP FIRM IN SALES & LEASING  
2010, 2011, 2012, 2013, 2014, 2015, 2016