



cRc Nationwide

COMMERCIAL REAL ESTATE CONSULTANTS



FOR LEASE

RIVERTON OFFICE SUITE

2364 WEST 12600 SOUTH, RIVERTON 84065

- Suite 2F: 1,031 RSF
- Parking Ratio: 4/1000 SF
- Tenant Improvements Available
- Monument Signage
- ADA Compliant with Elevator
- On Site Management
- Total Building: 15,016 SF
- Easy Access to I-15

LEASE RATE: \$12.00/SF NNN

KELLEN KONCAR

KELLEN.KONCAR@CRCNATIONWIDE.COM

8 0 1 . 6 1 7 . 1 7 0 0



COSTAR
POWER BROKER AWARD
TOP FIRM IN SALES & LEASING
2010, 2011, 2012, 2013, 2014, 2015, 2016

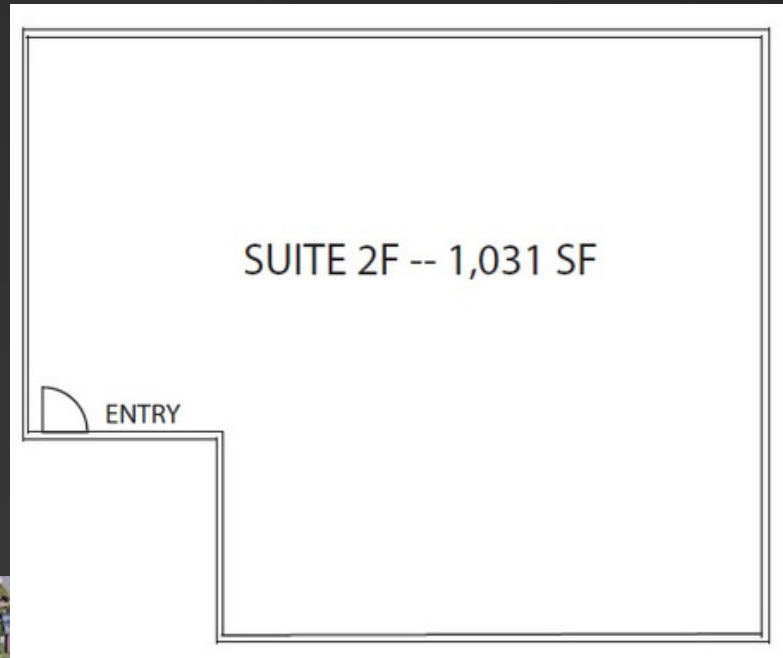




cRc Nationwide

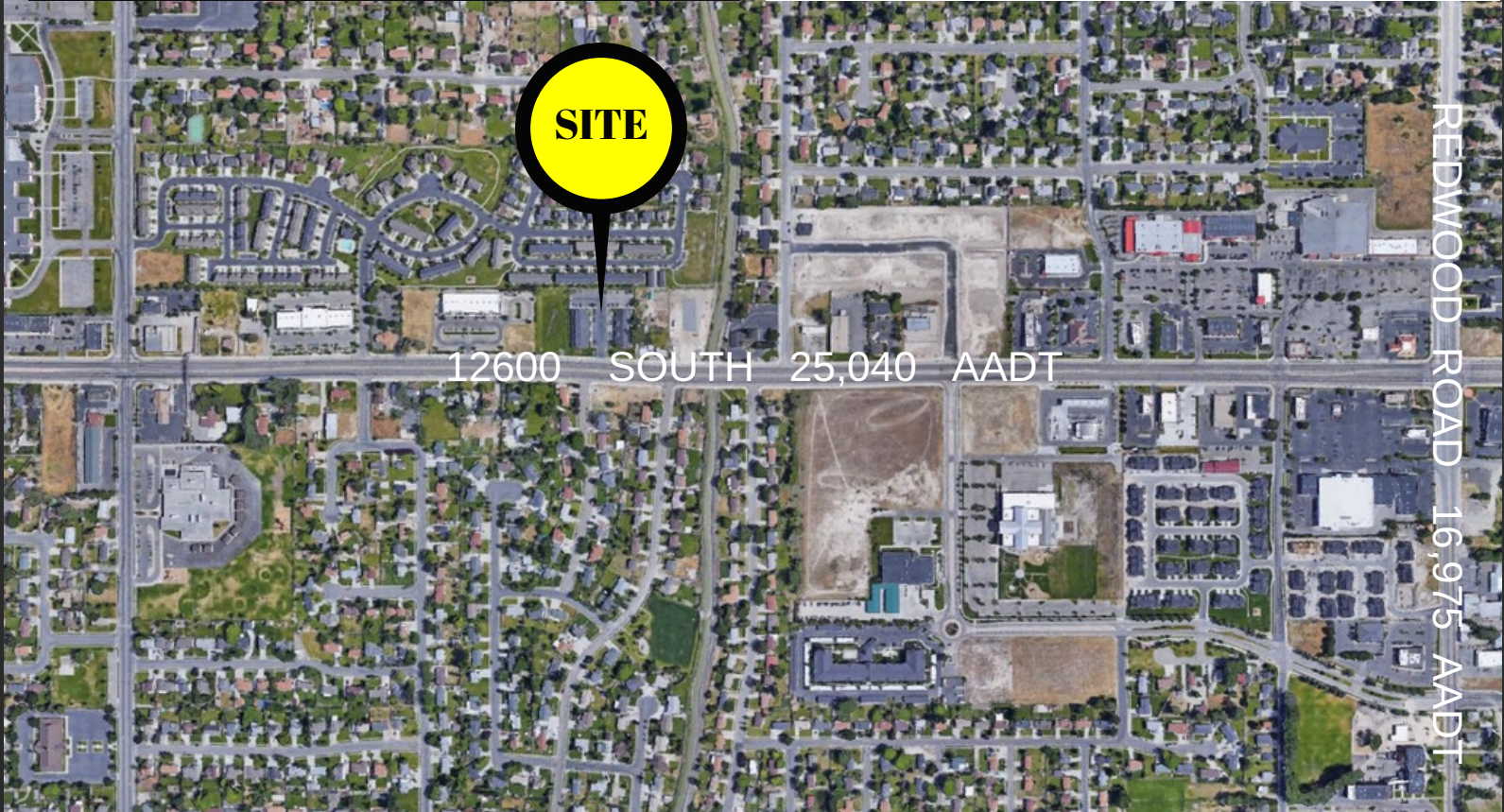
COMMERCIAL REAL ESTATE CONSULTANTS

2364 WEST 12600 SOUTH, RIVERTON, UTAH 84065



SUITE 2F -- 1,031 SF

ENTRY



SITE

12600 SOUTH 25,040 AADT

REDWOOD ROAD 16,975 AADT

KELLEN KONCAR

KELLEN.KONCAR@CRCNATIONWIDE.COM

801.617.1700



COSTAR
POWER BROKER AWARD
TOP FIRM IN SALES & LEASING
2010, 2011, 2012, 2013, 2014, 2015, 2016