



cRc Nationwide

COMMERCIAL REAL ESTATE CONSULTANTS

2530 S. WEST TEMPLE, SALT LAKE CITY 84115

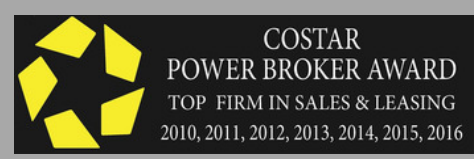


SALT LAKE CITY OFFICE WAREHOUSE WITH FENCED YARD FOR LEASE

- 17,530 SF Total
2,880 SF Office Space
14,650 SF Warehouse/Industrial
- Site Size: 0.64 Acres
- Fenced Yard
- Clearance Height: 16' - 20'
- (4) 10' x 10' GL Doors
- (2) 12' x 12' GL Doors
- (1) 14' x 12' GL Door
- 3 Phase Power/480 Volt/600 Amps
- Year Built: 1971
- Skylights Throughout Warehouse
- Evaporative Cooling
- Air Lines Run Through the Facility
- Steel Construction
- Parking Stalls: 22
- Easy Access to I-80 and I-15

LEASE RATE: \$0.50/SF MONTH NNN

**CONTACT
801.617.1700**



WEST HARADIN
west.haradin@crcnationwide.com

DEREK KLOPFER
derek.klopfers@crcnationwide.com

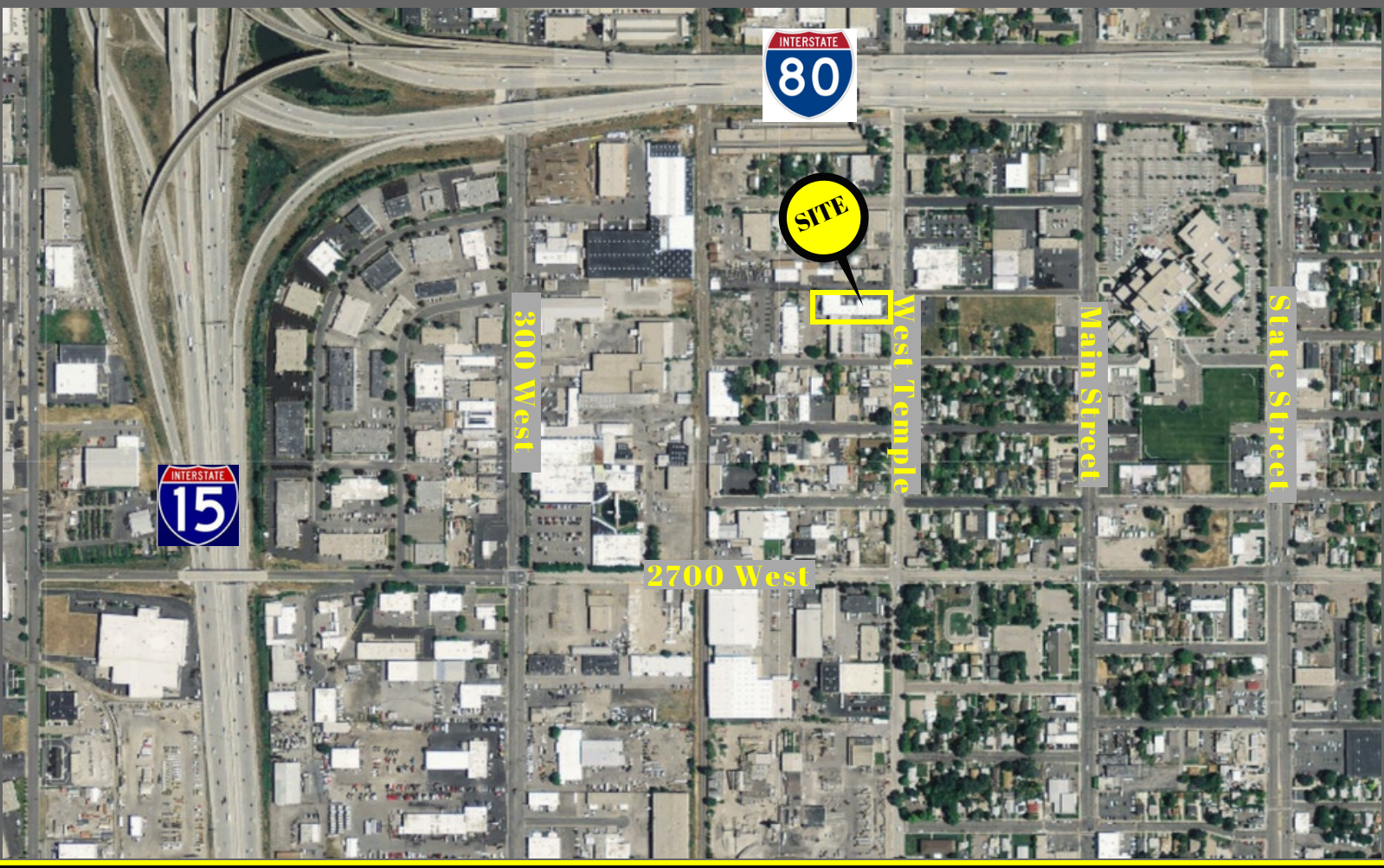


cRc Nationwide

COMMERCIAL REAL ESTATE CONSULTANTS



2530 S. WEST TEMPLE, SALT LAKE CITY 84115



801.617.1700

WEST HARADIN
WEST.HARADIN@CRCNATIONWIDE.COM

DEREK KLOPFER
DEREK.KLOPFER@CRCNATIONWIDE.COM