



cRc Nationwide

COMMERCIAL REAL ESTATE CONSULTANTS



INDUSTRIAL FACILITY WITH YARD

2930 W. DIRECTORS ROW, SALT LAKE CITY 84104

31,680 SF Total Building
- 26,880 SF Manufacturing Warehouse
- 4,800 SF Office

(2) 14' x 14' GL Doors
Exterior Dock High Loading
Power: 1,200 Amps/ 480 Volt/ 3 Phase
Destratification Fans
Radiant Heat & GFA
(1) Paint Booth
Clear Height: 14'
Fenced Yard
44 Parking Spaces
Zoning: Light Industrial
Site Size: 1.99 Acres
Built in 1977
Easy Access to I-215, I-80 and SR 201

**SELLER FINANCING AVAILABLE
SALE PRICE REDUCED!!**

~~\$1,950,000.00~~

~~\$1,795,000.00~~

~~\$1,695,000.00~~

~~\$1,595,000.00~~

~~\$1,495,000.00~~

LEASE RATE: \$0.28/SF/MONTH NNN

801.617.1700

WEST HARADIN

WEST.HARADIN@CRCNATIONWIDE.COM

DEREK KLOPFER

DEREK.KLOPFER@CRCNATIONWIDE.COM

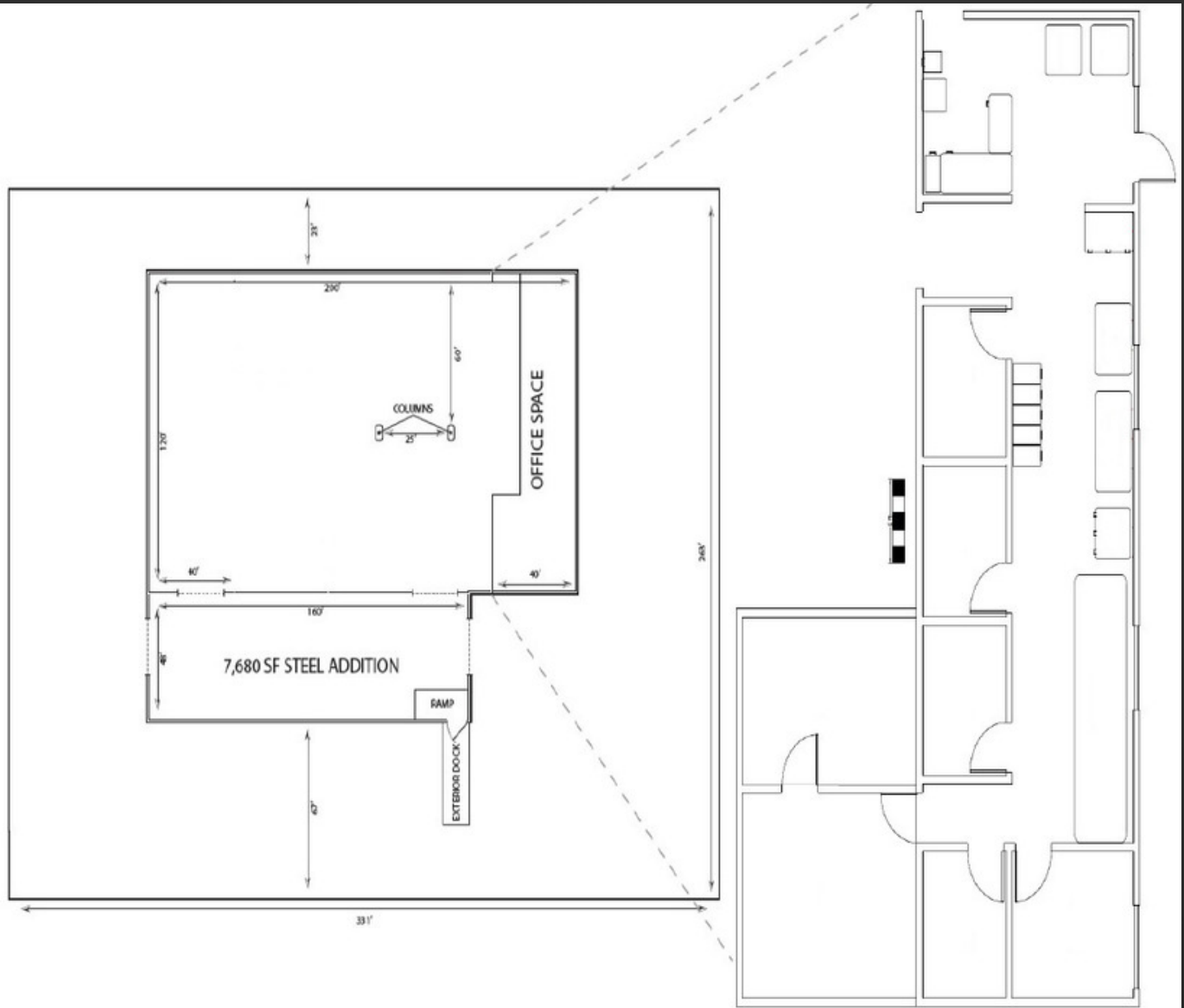
FOR SALE OR LEASE





cRc Nationwide

COMMERCIAL REAL ESTATE CONSULTANTS





cRc Nationwide

COMMERCIAL REAL ESTATE CONSULTANTS



2930 W. DIRECTORS ROW, SALT LAKE CITY 84104



CONTACT

801.617.1700

WEST HARADIN
WEST.HARADIN@CRCNATIONWIDE.COM

DEREK KLOPFER
DEREK.KLOPFER@CRCNATIONWIDE.COM