

# Office Space For Lease

**4748 Engle Rd, Carmichael, CA 95608**



- ◆ **4 Suites Available**

~~Suite 105: 600 sf~~ - LEASED

~~Suite 202: 700 sf~~ - LEASED

Suite 204: 800 sf - 2 sinks in Suite

Suite 205: 650 sf

Suite 206: 1,000 sf - 1 sink in Suite

Suite 207: 900 sf

- ◆ Two Story 11,965 sf Office Building
- ◆ Ample Parking
- ◆ Elevator
- ◆ Mature Landscaping
- ◆ Full Commission to Procuring Broker
- ◆ Full Bathrooms in each Suite
- ◆ **FANTASTIC PRICING and GOING FAST!**

**Lease Rate: \$.65psf**

**NNN - \$.26/psf**

**FOR FURTHER INFORMATION, CONTACT: (916) 929-2000**

**DENNIS VOLLMAN : [dvollman@thevollmancompany.com](mailto:dvollman@thevollmancompany.com)**

**LU ANN HENDERSON : [lhenderson@thevollmancompany.com](mailto:lhenderson@thevollmancompany.com)**

**DAN MINCHER : [dmincher@thevollmancompany.com](mailto:dmincher@thevollmancompany.com)**

**AMY DIEDRICH : [adiedrich@thevollmancompany.com](mailto:adiedrich@thevollmancompany.com)**



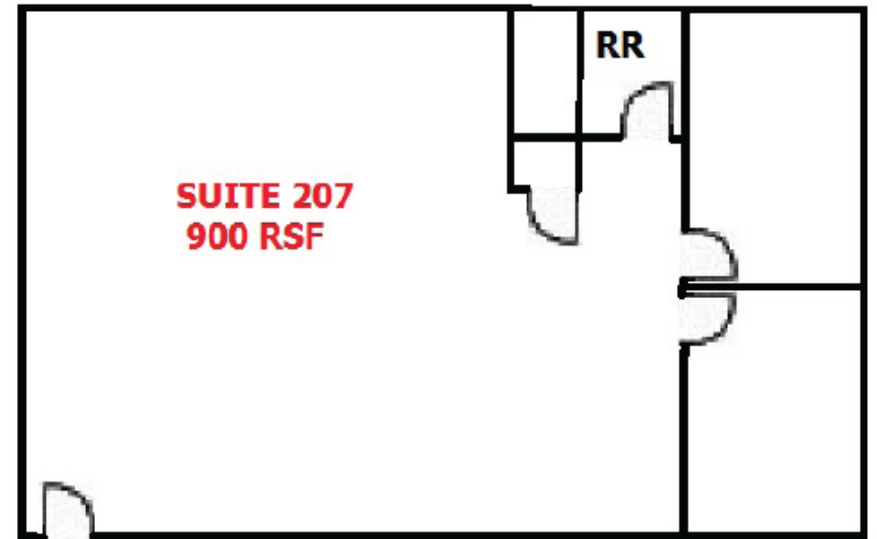
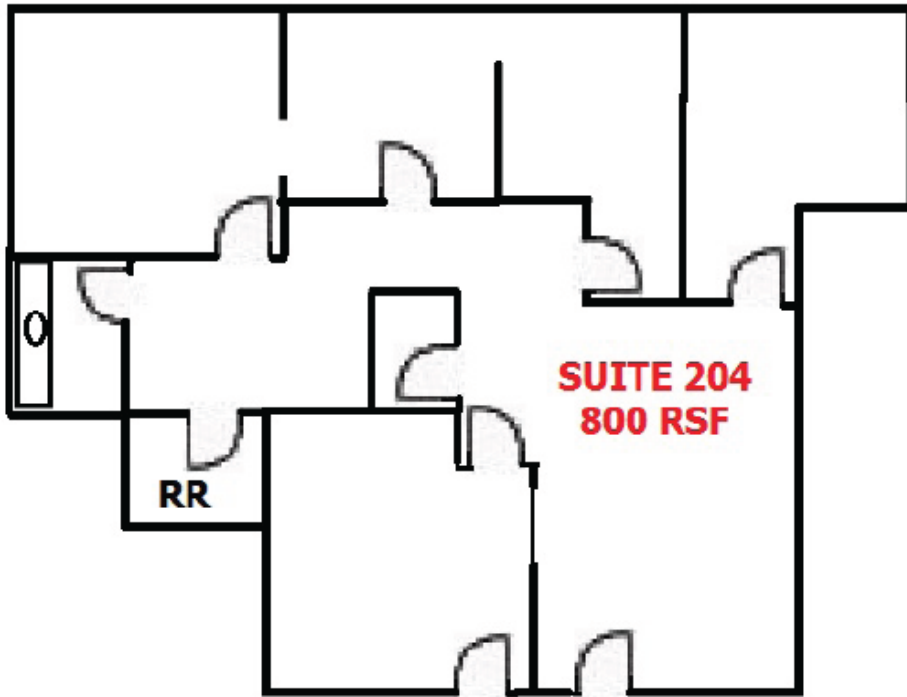
License # 00915268

**THE VOLLMAN COMPANY, INC.**  
COMMERCIAL REAL ESTATE BROKERAGE  
1900 POINT WEST WAY, SUITE 161  
SACRAMENTO, CA 95815-4706  
916/929-2000 FAX 916/929-7857  
[www.thevollmancompany.com](http://www.thevollmancompany.com)

**THE ABOVE INFORMATION, WHILE NOT GUARANTEED, HAS BEEN SECURED FROM SOURCES WE BELIEVE TO BE RELIABLE**

# Office Space For Lease

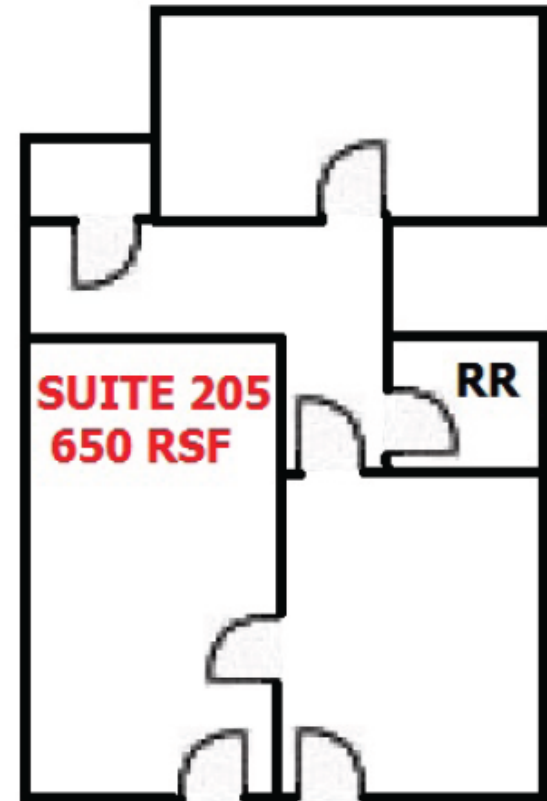
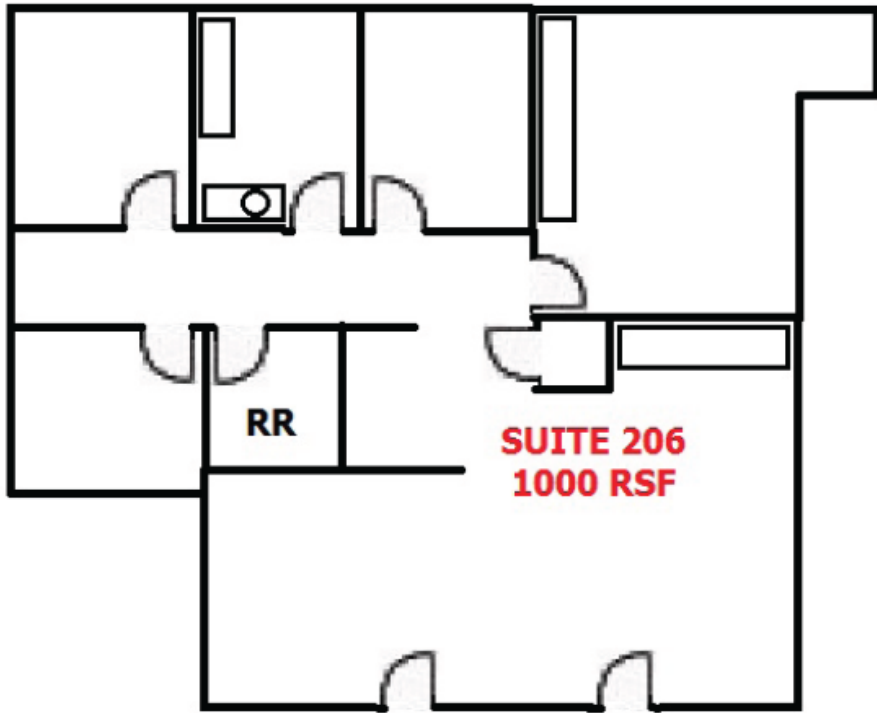
4748 Engle Rd, Carmichael, CA 95608



THE ABOVE INFORMATION, WHILE NOT GUARANTEED, HAS BEEN SECURED FROM SOURCES WE BELIEVE TO BE RELIABLE

# Office Space For Lease

4748 Engle Rd, Carmichael, CA 95608



THE ABOVE INFORMATION, WHILE NOT GUARANTEED, HAS BEEN SECURED FROM SOURCES WE BELIEVE TO BE RELIABLE



# Office Space For Lease

4748 Engle Rd, Carmichael, CA 95608



THE ABOVE INFORMATION, WHILE NOT GUARANTEED, HAS BEEN SECURED FROM SOURCES WE BELIEVE TO BE RELIABLE