



cRc Nationwide

921 EAST EXECUTIVE PARK DRIVE (5375 SOUTH)
MURRAY, UTAH 84117



PROPERTY INFORMATION

- 921 B: 1,200 SF
- Lease Rate: \$1,200.00/Month MG
- Tenant Pays Power & Gas
- Private Entrances
- Private Restrooms
- Ample Parking
- No Load Factor
- New Scenic Landscaping
- Centrally Located in Murray
- Many Nearby Amenities
- High Traffic Counts



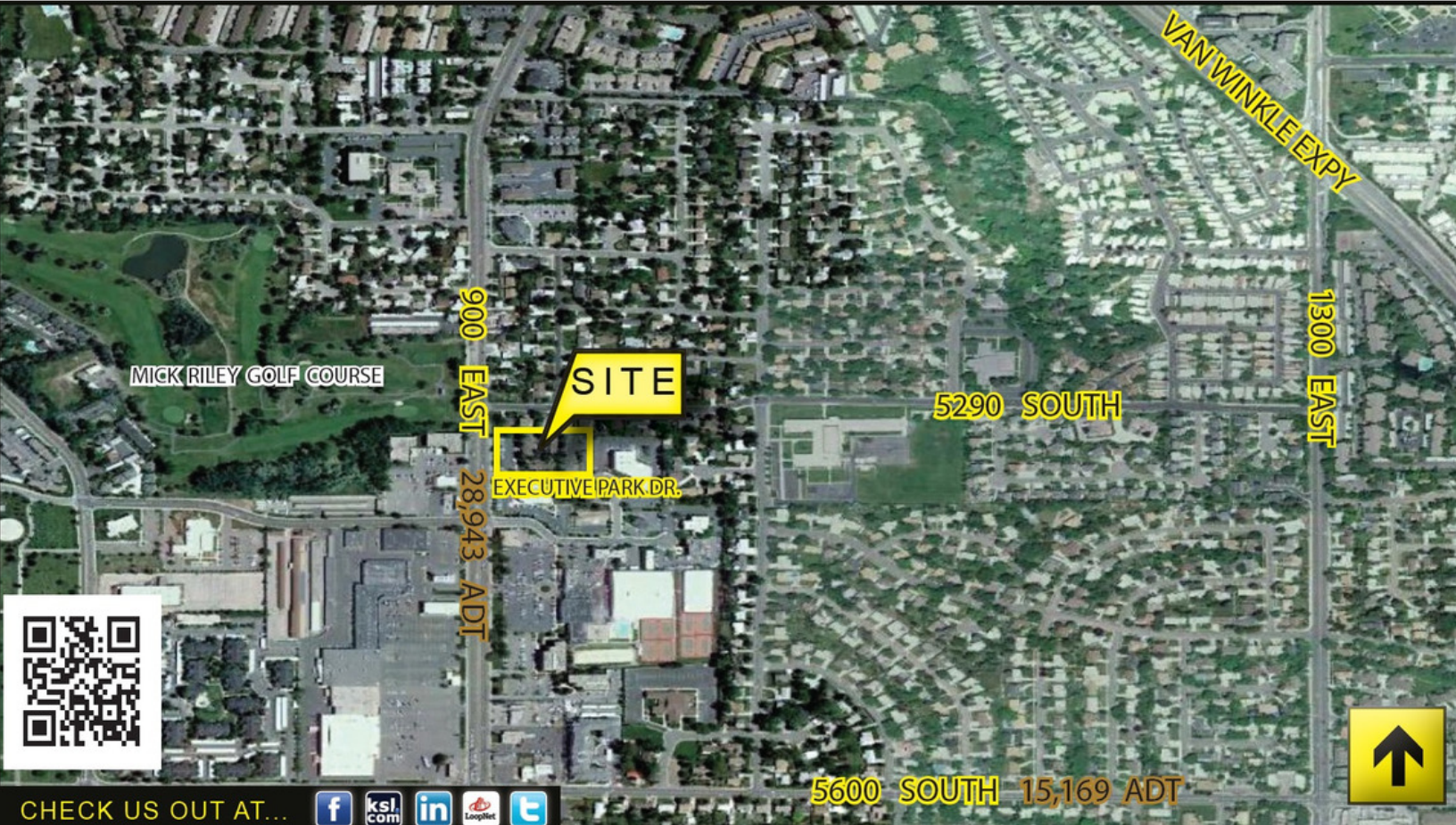
GREG MCDONALD
GREG.MCDONALD@CRCNATIONWIDE.COM

801.617.1700



cRc Nationwide

921 EAST EXECUTIVE PARK DRIVE (5375 SOUTH)
MURRAY, UTAH 84117



CHECK US OUT AT... [f](#) [ksl.com](#) [in](#) [LoopNet](#) [t](#)

Demographics

	1 Mile	3 Mile	5 Mile
Population	17,981	138,111	344,653
Households	7,768	55,284	129,791
Avg. Household Income	\$56,092	\$55,926	\$58,284

Traffic Counts

900 East: 29,702 Annual Average Daily Traffic
 5600 South: 23,509 Annual Average Daily Traffic

801.617.1700

GREG MCDONALD

GREG.MCDONALD@CRCNATIONWIDE.COM

