

# Industrial Office Space For Lease

3650 51st Avenue  
Sacramento, CA 95823

## Availability:

**3650 - A** - 591 sf of air conditioned office or clean assembly area with a shared restroom

Room 2 - 120 sf - \$150.00 (\$1.25 psf)

Room 3 - 471 sf - \$500.00 (\$1.06 psf)

NO CAM Charges

**3650 - B** - 940 sf of air conditioned office or clean assembly area or classroom space with private restroom.

\$940/month (\$1.00 psf)

NO CAM Charges

- M-1 Light Industrial
- 100 ampere, 110/208 volt, 3 phase electric service

## FOR FURTHER INFORMATION, CONTACT:

**(916) 929-2000**

**Dennis Vollman - [dvollman@thevollmancompany.com](mailto:dvollman@thevollmancompany.com)**

**Alex Byrd - [alexbyrd@thevollmancompany.com](mailto:alexbyrd@thevollmancompany.com)**

**Lu Ann Henderson - [lhenderson@thevollmancompany.com](mailto:lhenderson@thevollmancompany.com)**

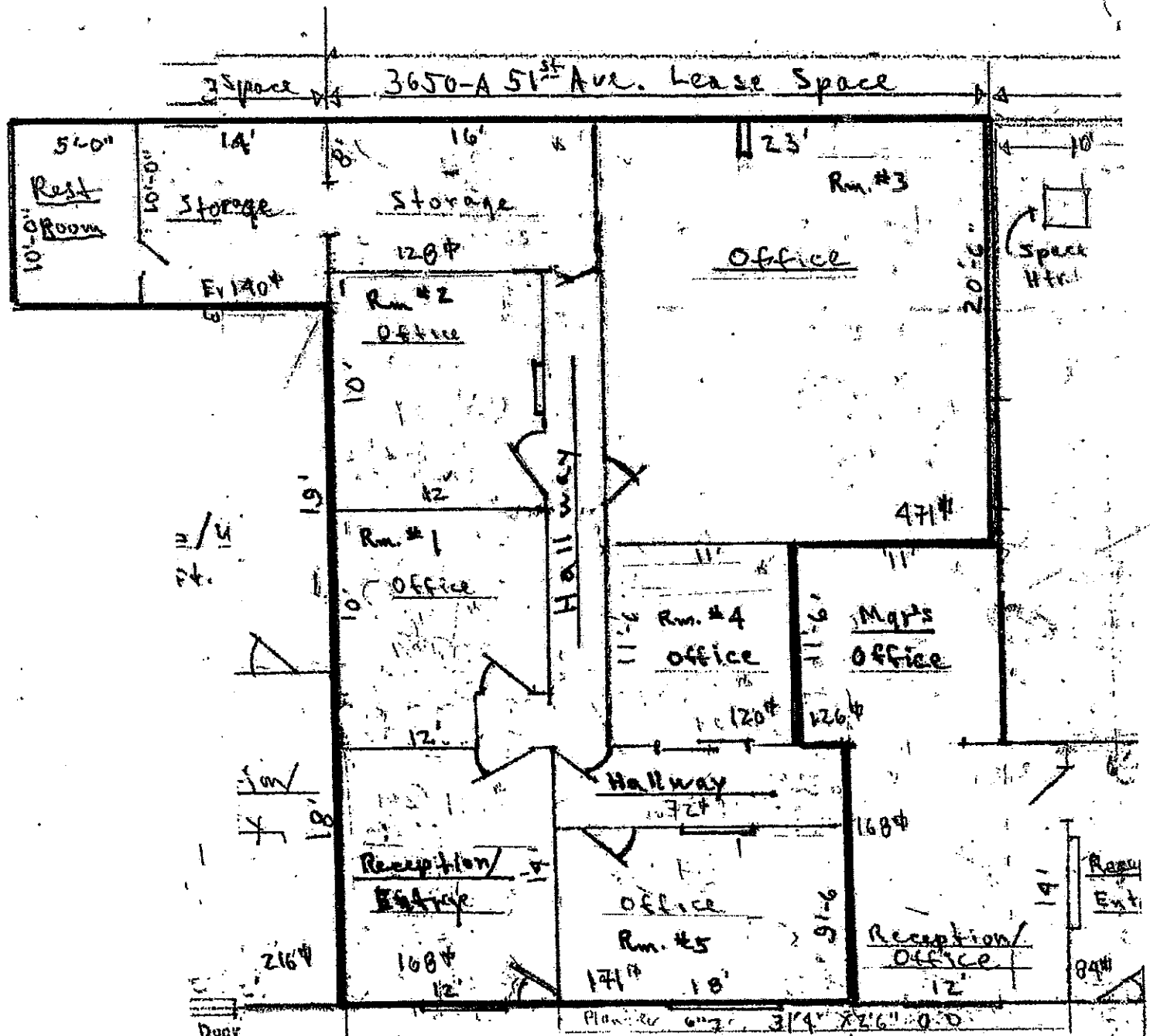


License # 00915268

**THE VOLLMAN COMPANY, INC.**  
COMMERCIAL REAL ESTATE BROKERAGE  
1900 POINT WEST WAY, SUITE 161  
SACRAMENTO, CA 95815-4706  
916/929-2000 FAX 916/929-7857  
[www.thevollmancompany.com](http://www.thevollmancompany.com)

For additional information about this or our other properties please visit our website at: [www.thevollmancompany.com](http://www.thevollmancompany.com)  
THE ABOVE INFORMATION, WHILE NOT GUARANTEED, HAS BEEN SECURED FROM SOURCES WE BELIEVE TO BE RELIABLE



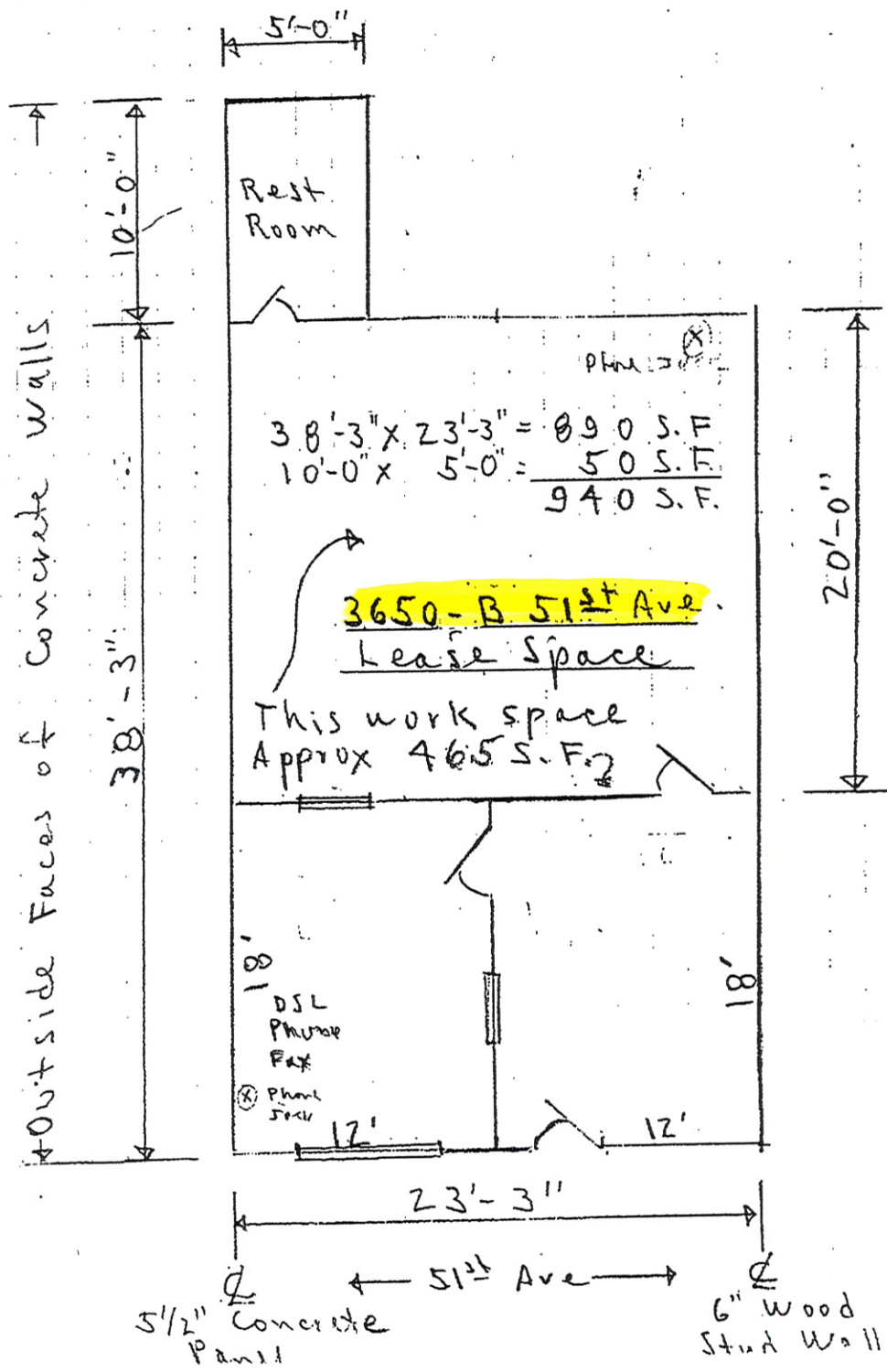


3650-A 51<sup>st</sup> Ave. Lease Space

3650-51<sup>st</sup> Ave

3650 A - 51<sup>st</sup> Ave

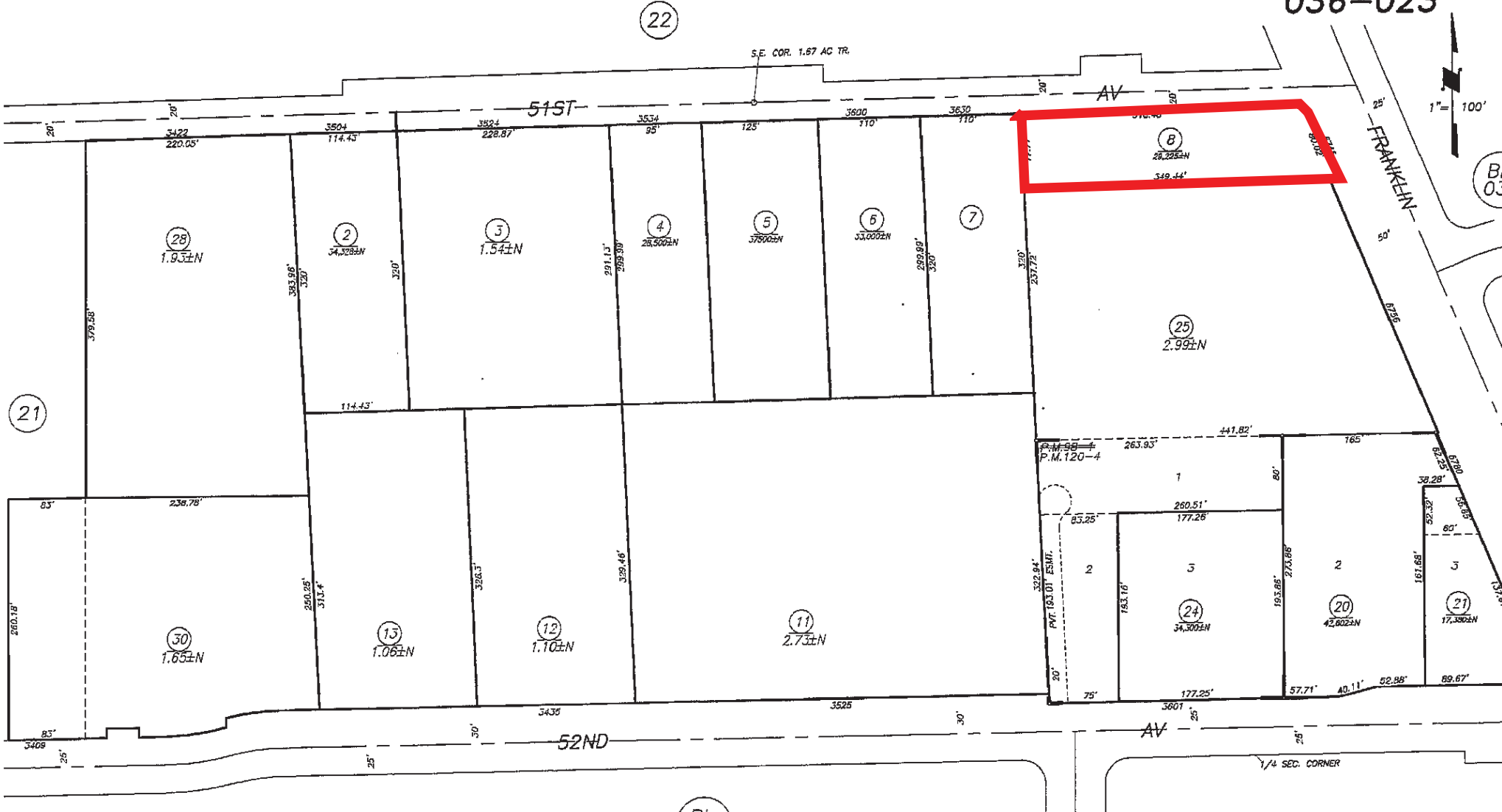
Total 1540<sup>sq</sup> Ft. Area



Frank Cirilli  
 Commercial Bldg

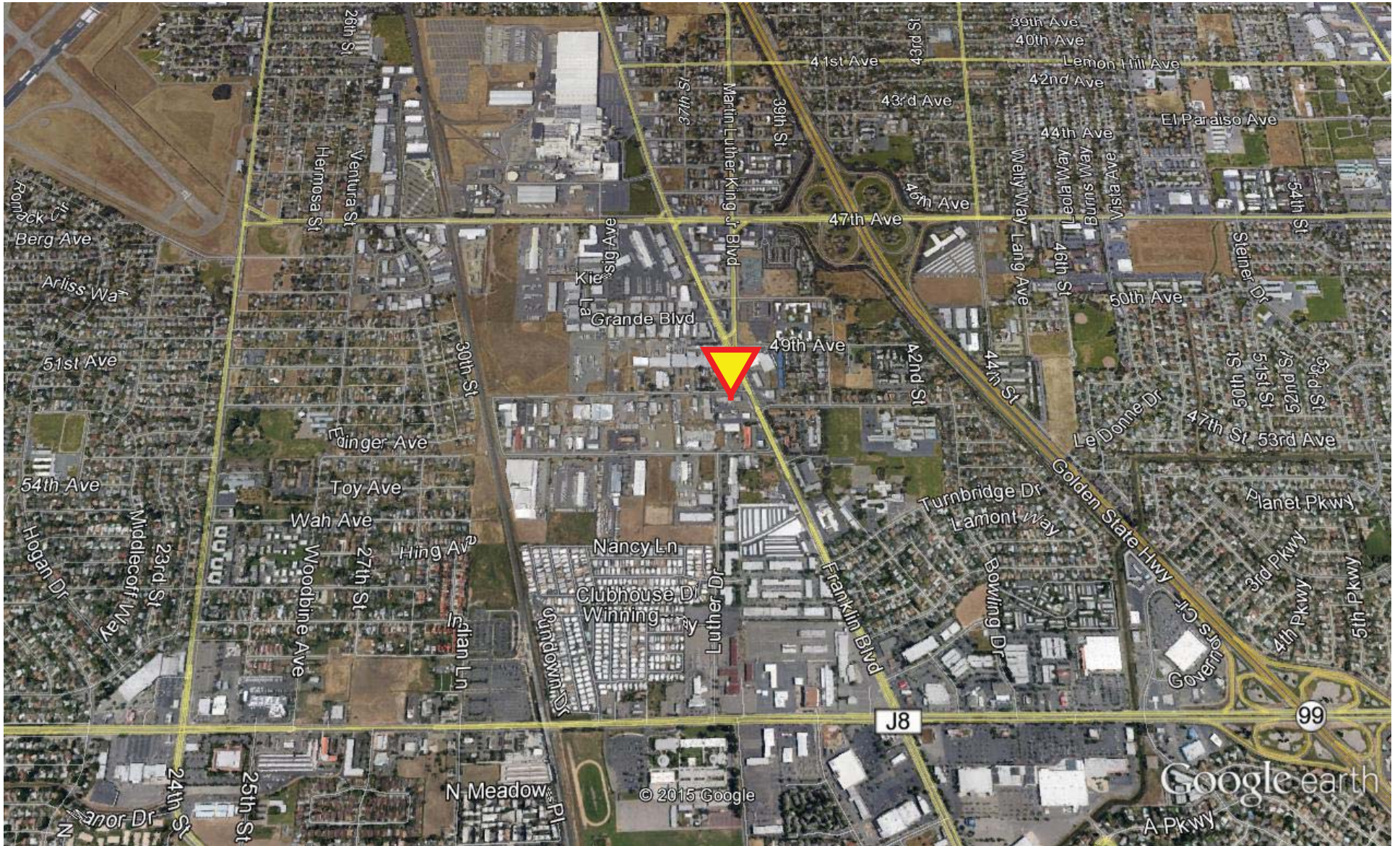
POR. N.E. 1/4 SEC. 31 & N.W. 1/4 SEC. 32, T.8N., R.5E., M.D.B. & M.

036-023



Bk.  
041

Assessor's Map Bk. 036 Pg. 02  
County of Sacramento, Calif.



Google earth

miles  
km

