



- Suite 200: 1,900 RSF Available
Lease Rate: \$9.00/SF/Year NNN
- Monument Signage Available
- Total Building: 12,566 RSF
- Easy Access to I-15 and I-215
- Adjacent to TOSH and Close Proximity to IMC Hospital
- Fiber Available

Demographics

	1 Mile	3 Mile	5 Mile
Population	14,574	135,656	367,628
Households	5,728	53,785	134,737
Avg. Household Income	\$57,144	\$55,523	\$59,609

Traffic Counts

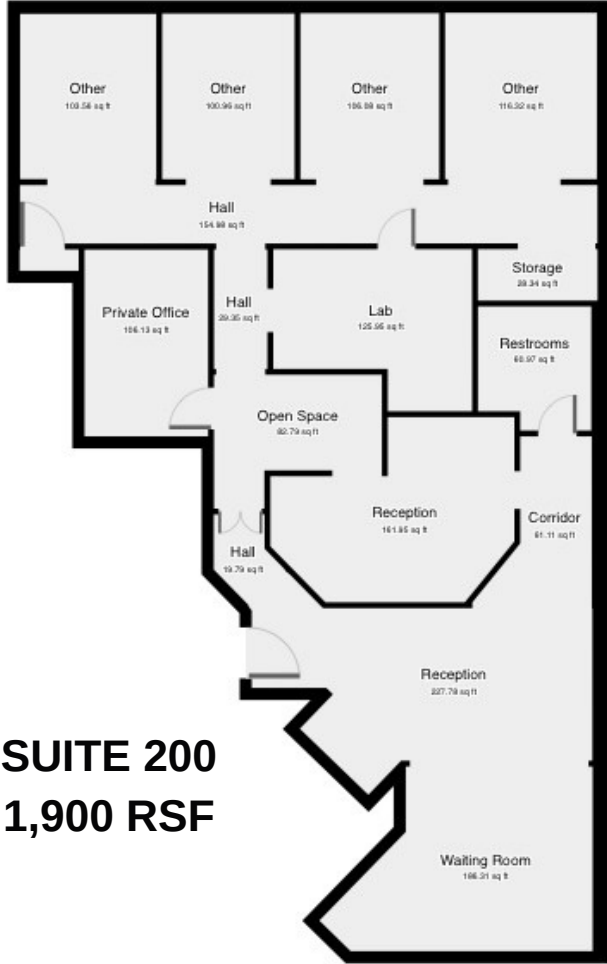
Fashion Blvd.: 10,730 Annual Average Daily Traffic
5900 South: 10,590 Annual Average Daily Traffic

801.617.1700



cRc Nationwide

279 EAST 5900 SOUTH, MURRAY, UTAH 84107



**SUITE 200
1,900 RSF**



KELLEN KONCAR

801.617.1700

DANEILE SNELLING

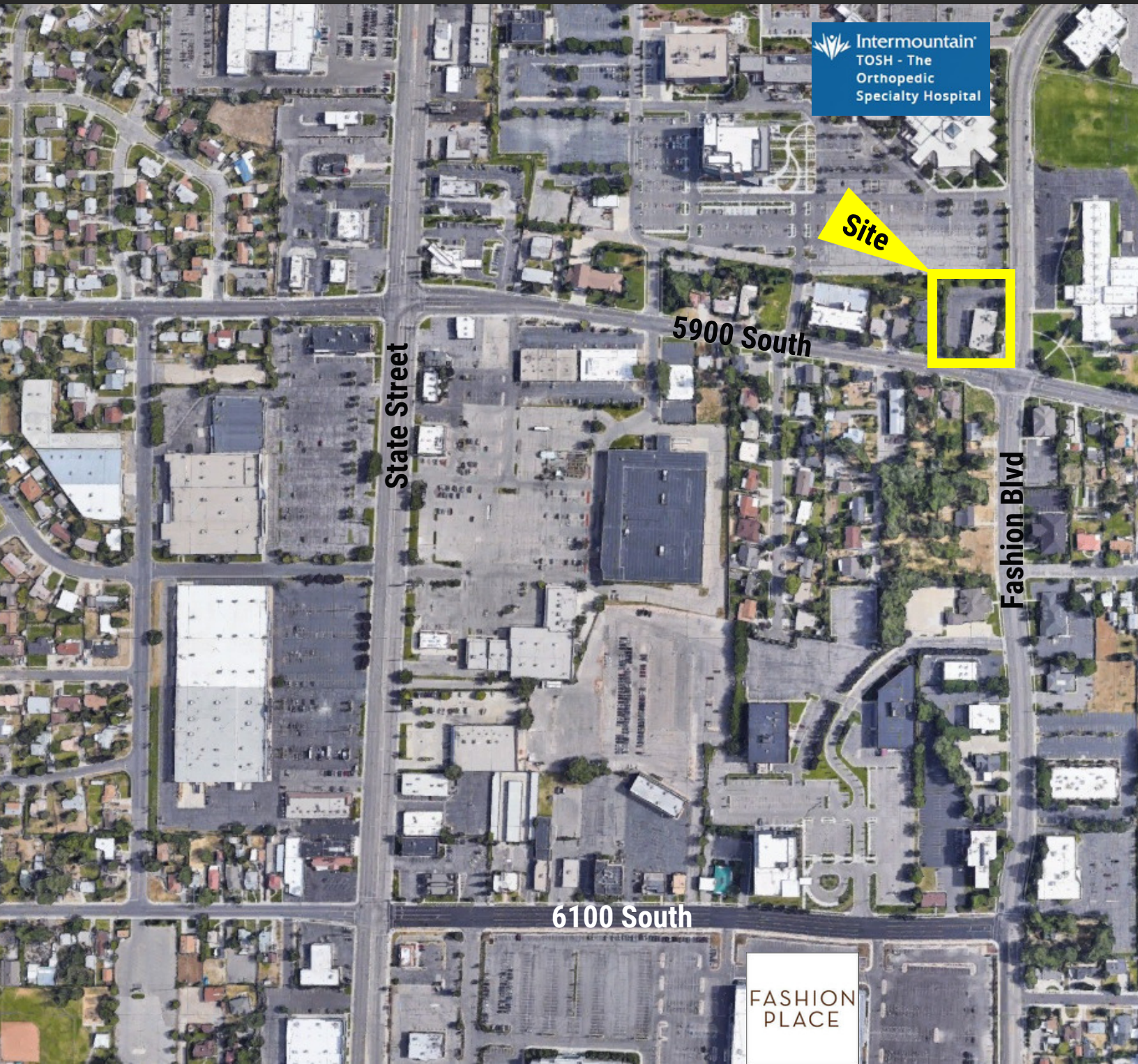
KELLEN.KONCAR@CRCNATIONWIDE.COM

DANEILE.SNELLING@CRCNATIONWIDE.COM



cRc Nationwide

279 EAST 5900 SOUTH, MURRAY, UTAH 84107



Intermountain
TOSH - The
Orthopedic
Specialty Hospital

Site

5900 South

State Street

Fashion Blvd

6100 South

FASHION
PLACE

KELLEN KONCAR

801.617.1700

DANEILE SNELLING

KELLEN.KONCAR@CRCNATIONWIDE.COM

DANEILE.SNELLING@CRCNATIONWIDE.COM