

FOR LEASE



WACCAMAW MEDICAL PARK

162 Waccamaw Medical Park • Conway, SC

FREE STANDING OFFICE BUILDING





PROPERTY INFO

Space:	Office
Size:	2,000 SF
PIN#:	151-33-01-005
Jurisdiction:	Horry County
Zoned:	Highway Commercial District
Permitted Use:	Professional Office, Public Services

HIGHLIGHTS

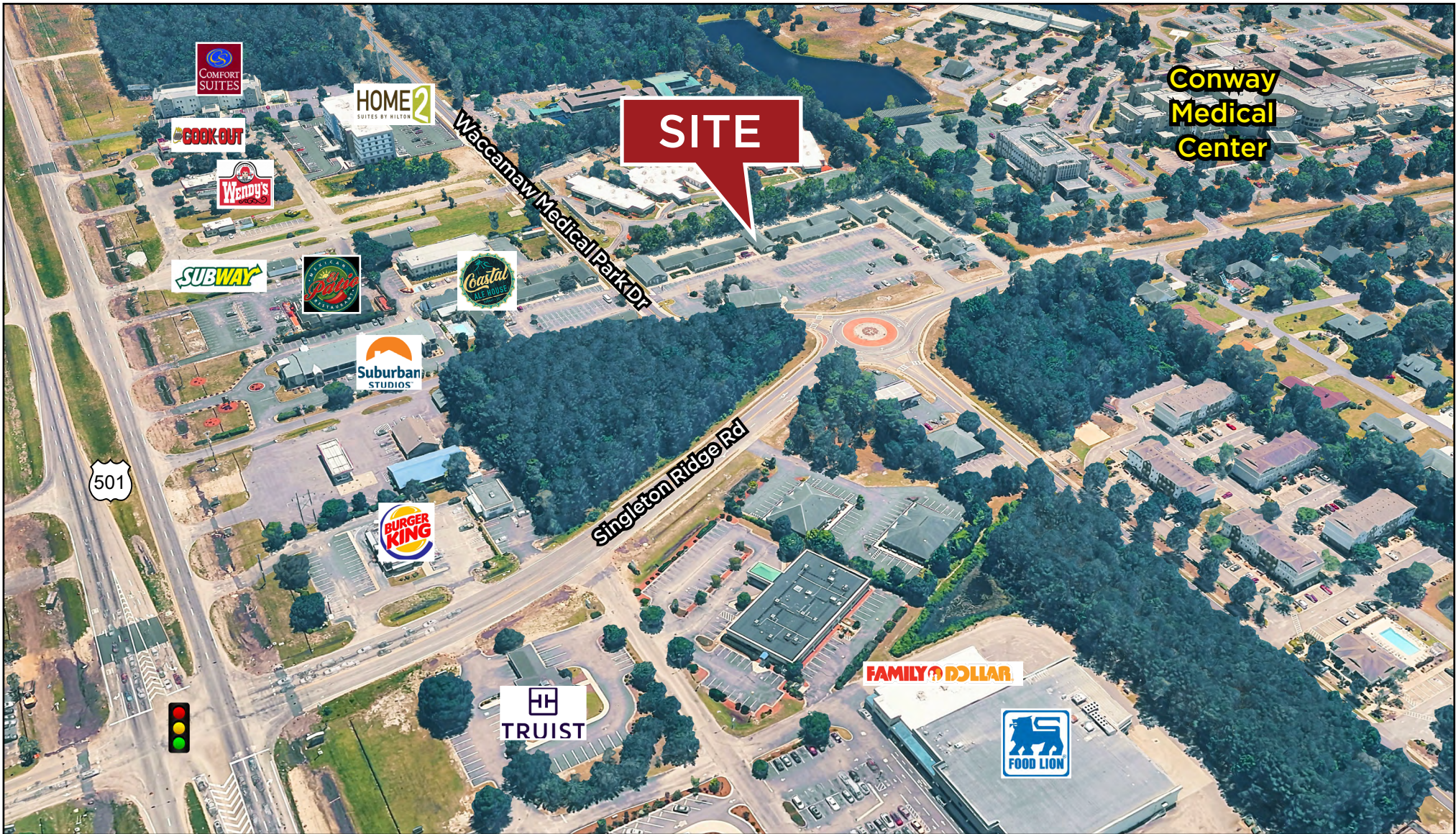
- 2,000 SF of Office space available.
- Well maintained free standing office building adjacent to Conway Medical Center.
- Convenient access to all area Medical Services.
- Ideal location for Physicians, Dentists, Medical Support Services.
- Property offers ample parking.
- \$3,600.00 Fixed Monthly Rent**



For more information, please contact:

Ken Marlowe, CCIM • 843.902.3325 • krmarlowe@hbsprings.com





For more information, please contact:

Ken Marlowe, CCIM • 843.902.3325 • krmarlowe@hbsprings.com

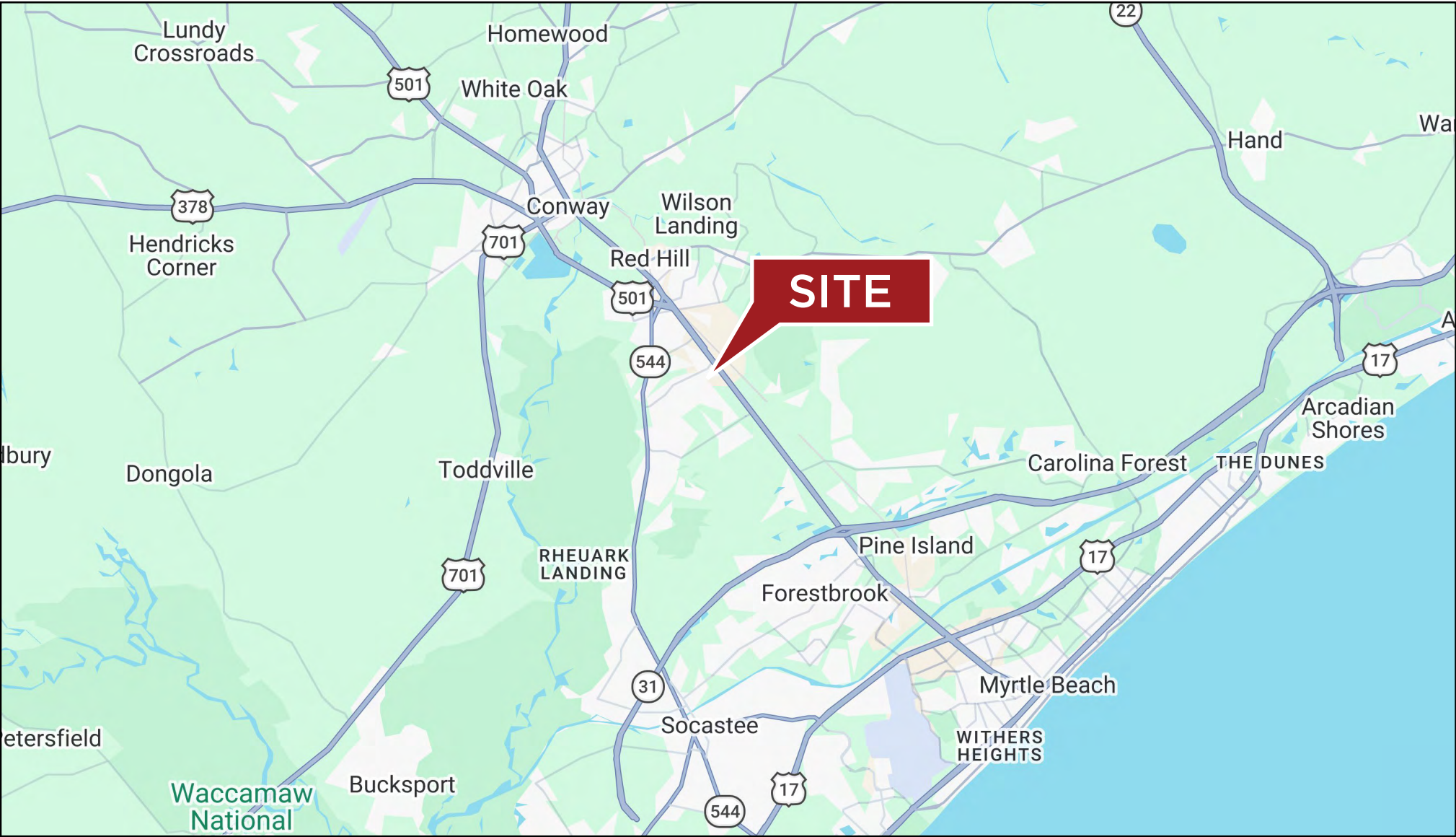




For more information, please contact:

Ken Marlowe, CCIM • 843.902.3325 • krmarlowe@hbsprings.com





For more information, please contact:

Ken Marlowe, CCIM • 843.902.3325 • krmarlowe@hbsprings.com

