

UPDATED 10/19/2018

# Executive Office Suites

8865 Commodity Circle Ste 12, Orlando, FL 32819



Listing ID: 30290813  
Status: Active  
Property Type: Office For Lease  
Office Type: Business Park, Executive Suites  
Contiguous Space: 115 - 158 SF  
Total Available: 930 SF  
Lease Rate: \$700 - 800 (Monthly)  
Unit Price: \$60.76 - 78.26 PSF (Annual)  
Base Monthly Rent: \$700 - 800  
Lease Type: Gross Lease

## Overview/Comments

GREAT LOCATION -COMPLETELY RENOVATED NEW MODERN OFFICES

PROFESSIONAL OFFICE SUITES FOR LEASE

CONTACT US TODAY \$ 750 - \$800 Per Month

email: Yvette@cflrg.com or call now 407-392-2201

SandLake & John Young Pkwy Area / SouthWest Orlando

We offer the best location in Orlando in a modern building with easy access:

10 minutes from Florida Mall

10 minutes from Hunters Creek

15 minutes from International Drive

15 minutes from Orlando International Airport

15 minutes from Disney Springs

We offer all of the following Amenities:

Utilities –All included (electricity, water, and A/C)

FREE internet services – Hard Wired and Secured WIFI for you and your guests

FREE conference room use

FREE digital lobby listing for your company

24-hour office access

Security has monitored Alarm and Cameras

12-month office lease minimum

Offices are accessed through a keyless entry system

Management on site for support

Conference room Access



## More Information Online

<http://www.catylist.com/listing/30290813>

## QR Code

Scan this image with your mobile device:



## General Information

Tax ID/APN: 292332406200001  
Office Type: Business Park, Executive Suites  
Zoning: 0412 - CONDO-OFF. BLDG  
Building Name: JY BUSINESS CENTER

Class of Space: Class A  
Gross Building Area: 2,900 SF  
Usable Size (USF): 2,900 SF

## Available Space

Suite/Unit Number:	12-201	Lease Term (Months):	12 Months
Suite Floor/Level:	2nd Floor	Lease Rate:	\$750 (Monthly)
Space Available:	126 SF	Lease Type:	Gross Lease
Minimum Divisible:	126 SF	Conference Rooms:	1
Maximum Contiguous:	126 SF	Offices:	1
Space Subcategory 1:	Business Park	Kitchen/Breakroom:	Yes
Space Type:	New	Parking Spaces:	0
Date Available:	05/18/2018		

Space Description PROFESSIONAL OFFICE SUITES FOR LEASE CONTACT US TODAY \$ 750 -\$800 Per Month email: Yvette@cflrg.com or call now 407-392-2201 NEW CONSTRUCTION, Modern Office, Available now for Move In SandLake & John Young Pkwy Area / SouthWest Orlando We offer the best location in Orlando in a modern building with easy access: 10 minutes from Florida Mall 10 minutes from Hunters Creek 15 minutes from International Drive 15 minutes from Orlando International Airport 15 minutes from Disney Springs We offer all of the following Amenities: Utilities –All included (electricity, water, and A/C) FREE internet services – Hard Wired and Secured WIFI for you and your guests FREE conference room use FREE digital lobby listing for your company 24-hour office access Security has monitored Alarm and Cameras 12-month office lease minimum Offices are accessed through a keyless entry system Management on site for support Conference room Access

## Available Space

Suite/Unit Number:	12-202	Date Available:	05/18/2018
Suite Floor/Level:	2nd Floor	Lease Term (Months):	12 Months
Space Available:	126 SF	Lease Rate:	\$750 (Monthly)
Minimum Divisible:	126 SF	Lease Type:	Gross Lease
Maximum Contiguous:	126 SF	Conference Rooms:	1
Space Subcategory 1:	Business Park	Offices:	1
Space Type:	New	Kitchen/Breakroom:	Yes

Space Description PROFESSIONAL OFFICE SUITES FOR LEASE CONTACT US TODAY \$ 750 -\$800 Per Month email: Yvette@cflrg.com or call now 407-392-2201 NEW CONSTRUCTION, Modern Office, Available now for Move In SandLake & John Young Pkwy Area / SouthWest Orlando We offer the best location in Orlando in a modern building with easy access: 10 minutes from Florida Mall 10 minutes from Hunters Creek 15 minutes from International Drive 15 minutes from Orlando International Airport 15 minutes from Disney Springs We offer all of the following Amenities: Utilities –All included (electricity, water, and A/C) FREE internet services – Hard Wired and Secured WIFI for you and your guests FREE conference room use FREE digital lobby listing for your company 24-hour office access Security has monitored Alarm and Cameras 12-month office lease minimum Offices are accessed through a keyless entry system Management on site for support Conference room Access

## Available Space

Suite/Unit Number:	12-204	Date Available:	05/18/2018
Suite Floor/Level:	2nd Floor	Lease Term (Months):	12 Months
Space Available:	116 SF	Lease Rate:	\$750 (Monthly)
Minimum Divisible:	116 SF	Lease Type:	Gross Lease
Maximum Contiguous:	116 SF	Conference Rooms:	1
Space Subcategory 1:	Business Park	Offices:	1
Space Type:	New	Kitchen/Breakroom:	Yes

Space Description PROFESSIONAL OFFICE SUITES FOR LEASE CONTACT US TODAY \$ 750 -\$800 Per Month email: Yvette@cflrg.com or call now 407-392-2201 NEW CONSTRUCTION, Modern Office, Available now for Move In SandLake & John Young Pkwy Area / SouthWest Orlando We offer the best location in Orlando in a modern building with easy access: 10 minutes from Florida Mall 10 minutes from Hunters Creek 15 minutes from International Drive 15 minutes from Orlando International Airport 15 minutes from Disney Springs We offer all of the following Amenities: Utilities –All included (electricity, water, and A/C) FREE internet services – Hard Wired and Secured WIFI for you and your guests FREE conference room use FREE digital lobby listing for your company 24-hour office access Security has monitored Alarm and Cameras 12-month office lease minimum Offices are accessed through a keyless entry system Management on site for support Conference room Access

## Available Space

Suite/Unit Number:	12-205	Date Available:	05/18/2018
Suite Floor/Level:	2nd Floor	Lease Term (Months):	12 Months
Space Available:	115 SF	Lease Rate:	\$750 (Monthly)
Minimum Divisible:	115 SF	Lease Type:	Gross Lease
Maximum Contiguous:	115 SF	Conference Rooms:	1
Space Subcategory 1:	Business Park	Offices:	1
Space Type:	New	Kitchen/Breakroom:	Yes

Space Description PROFESSIONAL OFFICE SUITES FOR LEASE CONTACT US TODAY \$ 750 -\$800 Per Month email: Yvette@cflrg.com or call now 407-392-2201 NEW CONSTRUCTION, Modern Office, Available now for Move In SandLake & John Young Pkwy Area / SouthWest Orlando We offer the best location in Orlando in a modern

building with easy access: 10 minutes from Florida Mall 10 minutes from Hunters Creek 15 minutes from International Drive 15 minutes from Orlando International Airport 15 minutes from Disney Springs We offer all of the following Amenities: Utilities –All included (electricity, water, and A/C) FREE internet services – Hard Wired and Secured WIFI for you and your guests FREE conference room use FREE digital lobby listing for your company 24-hour office access Security has monitored Alarm and Cameras 12-month office lease minimum Offices are accessed through a keyless entry system Management on site for support Conference room Access

### Available Space

Suite/Unit Number:	12-206	Date Available:	05/18/2018
Suite Floor/Level:	2nd Floor	Lease Term (Months):	36 Months
Space Available:	156 SF	Lease Rate:	\$800 (Monthly)
Minimum Divisible:	156 SF	Lease Type:	Gross Lease
Maximum Contiguous:	156 SF	Conference Rooms:	1
Space Subcategory 1:	Business Park	Offices:	1
Space Type:	New	Kitchen/Breakroom:	Yes

LEASED

Space Description PROFESSIONAL OFFICE SUITES FOR LEASE CONTACT US TODAY \$ 750 -\$800 Per Month email: Yvette@cflrg.com or call now 407-392-2201 NEW CONSTRUCTION, Modern Office, Available now for Move In SandLake & John Young Pkwy Area / SouthWest Orlando We offer the best location in Orlando in a modern building with easy access: 10 minutes from Florida Mall 10 minutes from Hunters Creek 15 minutes from International Drive 15 minutes from Orlando International Airport 15 minutes from Disney Springs We offer all of the following Amenities: Utilities –All included (electricity, water, and A/C) FREE internet services – Hard Wired and Secured WIFI for you and your guests FREE conference room use FREE digital lobby listing for your company 24-hour office access Security has monitored Alarm and Cameras 12-month office lease minimum Offices are accessed through a keyless entry system Management on site for support Conference room Access

### Available Space

Suite/Unit Number:	12-207	Date Available:	05/18/2018
Suite Floor/Level:	2nd Floor	Lease Term (Months):	12 Months
Space Available:	158 SF	Lease Rate:	\$800 (Monthly)
Minimum Divisible:	158 SF	Lease Type:	Gross Lease
Maximum Contiguous:	158 SF	Conference Rooms:	1
Space Subcategory 1:	Business Park	Offices:	1
Space Type:	New	Kitchen/Breakroom:	Yes

LEASED

Space Description PROFESSIONAL OFFICE SUITES FOR LEASE CONTACT US TODAY \$ 750 -\$800 Per Month email: Yvette@cflrg.com or call now 407-392-2201 NEW CONSTRUCTION, Modern Office, Available now for Move In SandLake & John Young Pkwy Area / SouthWest Orlando We offer the best location in Orlando in a modern building with easy access: 10 minutes from Florida Mall 10 minutes from Hunters Creek 15 minutes from International Drive 15 minutes from Orlando International Airport 15 minutes from Disney Springs We offer all of the following Amenities: Utilities –All included (electricity, water, and A/C) FREE internet services – Hard Wired and Secured WIFI for you and your guests FREE conference room use FREE digital lobby listing for your company 24-hour office access Security has monitored Alarm and Cameras 12-month office lease minimum Offices are accessed through a keyless entry system Management on site for support Conference room Access

### Available Space

Suite/Unit Number:	12-208	Date Available:	05/18/2018
Suite Floor/Level:	2nd Floor	Lease Term (Months):	12 Months
Space Available:	133 SF	Lease Rate:	\$700 (Monthly)
Minimum Divisible:	133 SF	Lease Type:	Gross Lease
Maximum Contiguous:	133 SF	Conference Rooms:	1
Space Subcategory 1:	Business Park	Offices:	1
Space Type:	New	Kitchen/Breakroom:	Yes

Space Description PROFESSIONAL OFFICE SUITES FOR LEASE CONTACT US TODAY \$ 750 -\$800 Per Month email: Yvette@cflrg.com or call now 407-392-2201 NEW CONSTRUCTION, Modern Office, Available now for Move In SandLake & John Young Pkwy Area / SouthWest Orlando We offer the best location in Orlando in a modern building with easy access: 10 minutes from Florida Mall 10 minutes from Hunters Creek 15 minutes from International Drive 15 minutes from Orlando International Airport 15 minutes from Disney Springs We offer all of the following Amenities: Utilities –All included (electricity, water, and A/C) FREE internet services – Hard Wired and Secured WIFI for you and your guests FREE conference room use FREE digital lobby listing for your company 24-hour office access Security has monitored Alarm and Cameras 12-month office lease minimum Offices are accessed through a keyless entry system Management on site for support Conference room Access

### Area & Location

Property Located Between:	Off of John Young Pkwy and Commodity Circle
Property Visibility:	Good
Airports:	Orlando International Airport

Highway Access This excellent location provides direct access to Sand Lake Rd, Orlando Convention Center, I-Drive, Universal Blvd, Beach Line (528)and I-4. Just minutes from Orlando International Airport and Orlando Downtown

**Area Description** This excellent location provides direct access 10 minutes from Florida Mall 10 minutes from Hunters Creek 15 minutes from International Drive 15 minutes from Orlando International Airport 15 minutes from Disney Springs

### Building Related

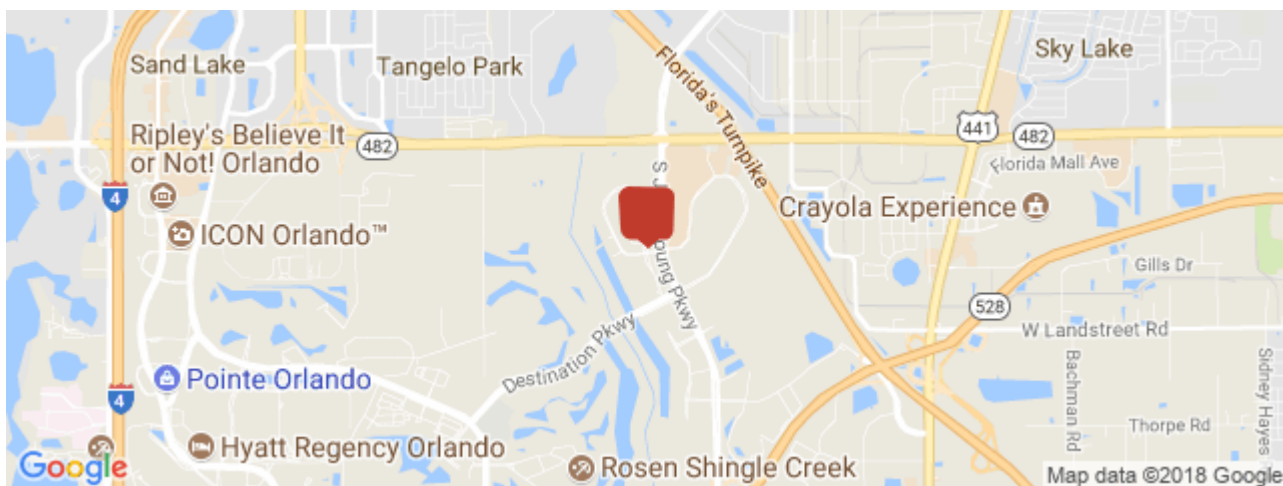
Total Number of Buildings:	1	Passenger Elevators:	0
Number of Stories:	2	Freight Elevators:	0
Year Built:	2007	Internet Access:	Cable
Year Renovated:	2018		

### Land Related

Water Service:	Municipal
Sewer Type:	Municipal

### Location

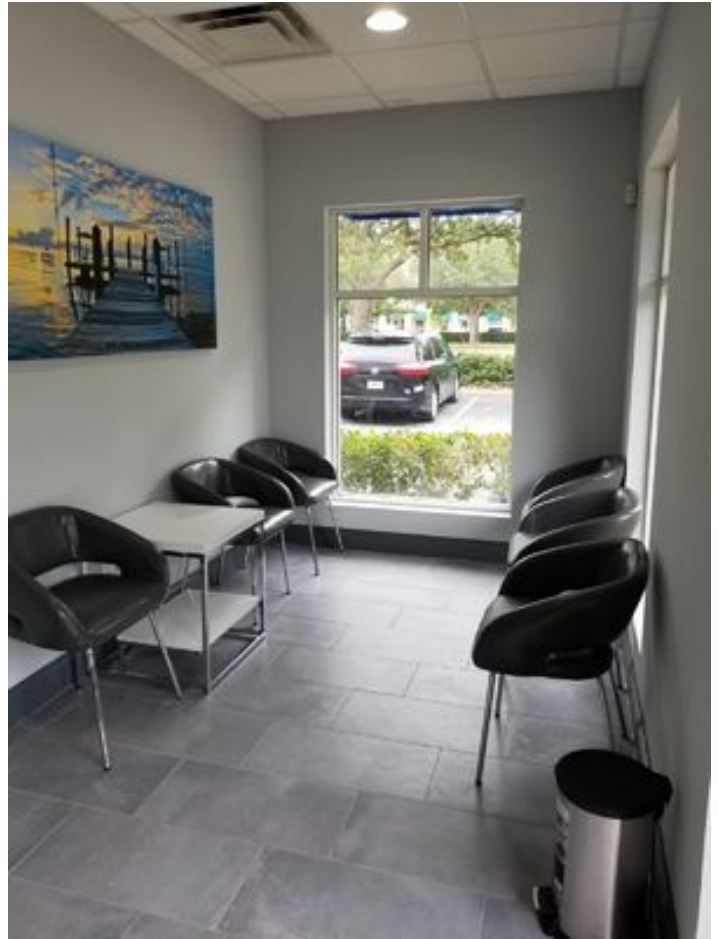
Address:	8865 Commodity Circle Ste 12, Orlando, FL 32819
County:	Orange
MSA:	Orlando-Kissimmee-Sanford



## Property Images



20180619\_140053



lobby





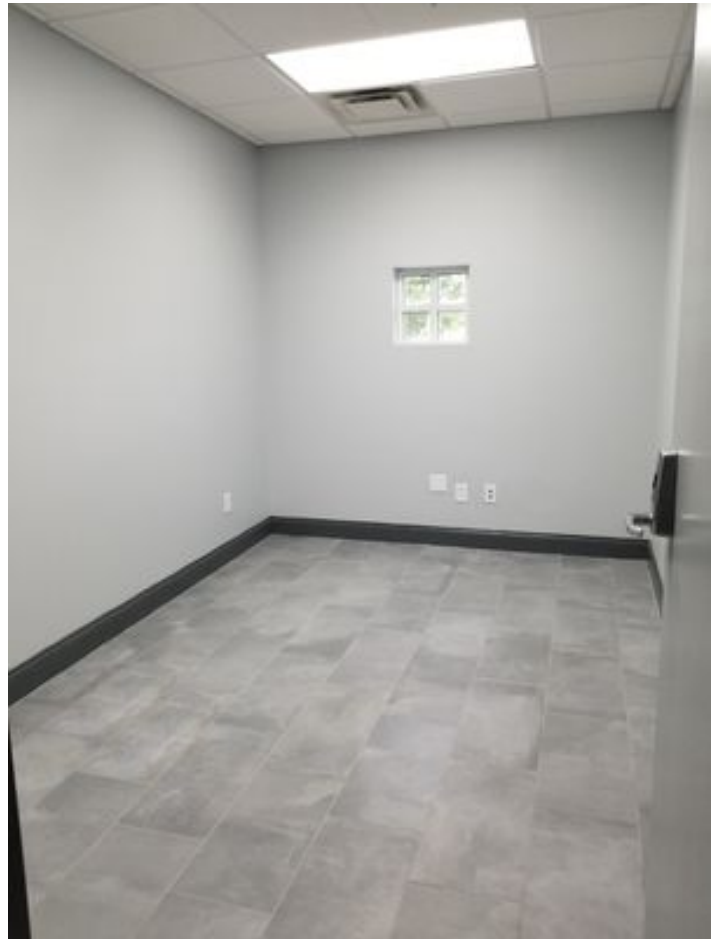
Digital Tenant Directory



1st Floor Kitchen



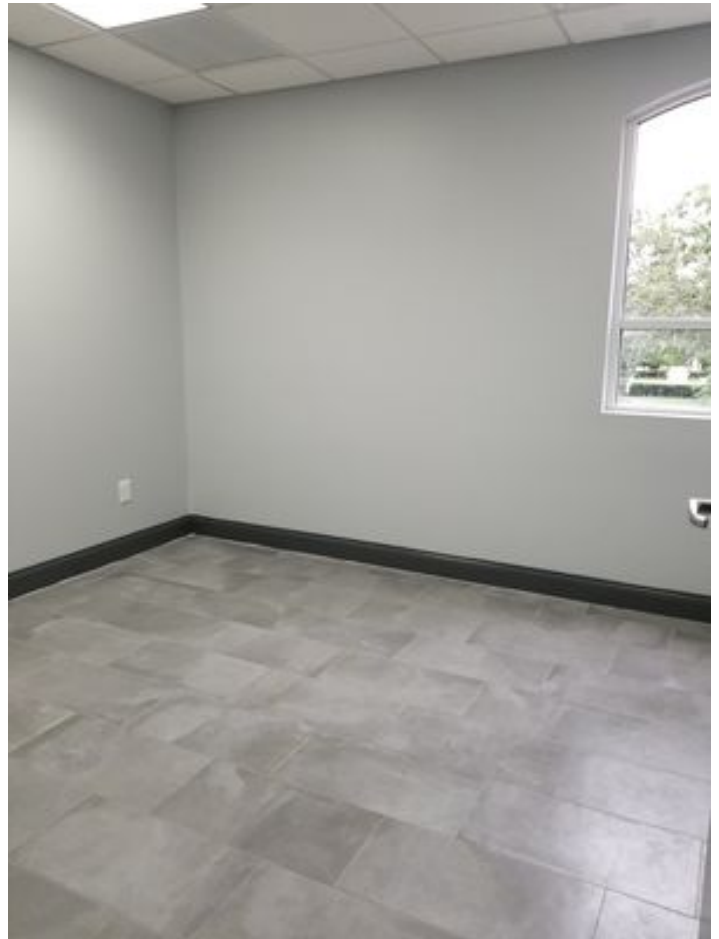
201 Office



202 Office



204 Office



205 Office





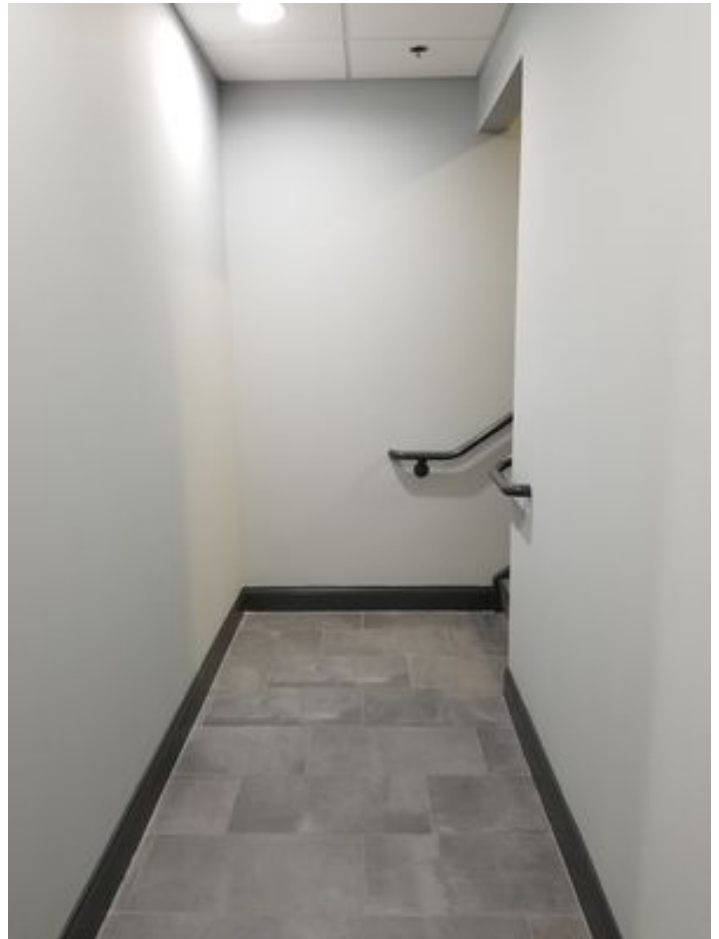
206 Office



207 Office



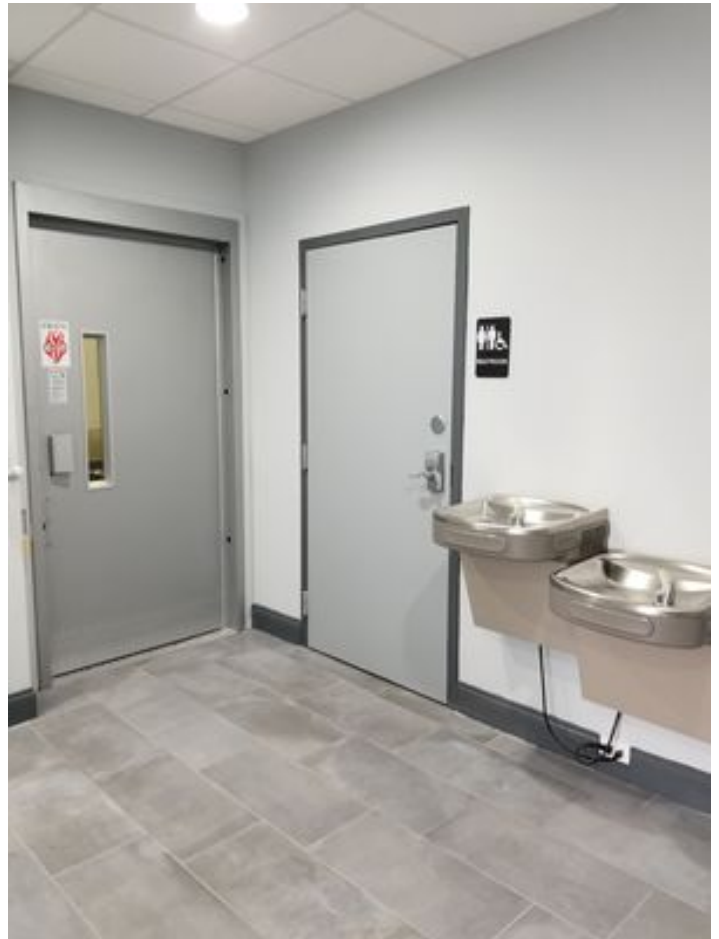
Conference Room



hall to 2nd Floor



Restrooms



Elevator

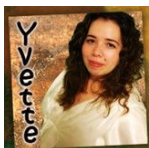


Rear exit



8865 Commodity MAP

## Property Contacts



### Yvette Iturrino

Central FL Realty Group  
407-731-5552 [M]  
407-392-2201 [O]  
yvette@cflrg.com